

31st Annual

**SLETTEN
ANGUS**

SALE

Monday, February 11th, 2019

1:00 PM_{MST}

Faith Livestock Commission • Faith, South Dakota





31st Annual

SLETTEN ANGUS

FEB. 11th, 2019

Sale

Bull videos at www.slettenangus.com

SALE HOSTS

Sletten Angus
John and Tammy Sletten
Box 615
Faith, SD 57626
(605) 967-2238 (Home)
(605) 484-7708 (Mobile)

SALE DATE & TIME

Monday, Feb. 11, 2019 at 1:00 p.m.

SALE LOCATION

Faith Livestock Commission Co.
Faith, South Dakota
*Faith has a hard surface 3200-ft runway.
Transportation to and from the airport
will be provided upon request.*

SALE DAY TELEPHONE

(605) 967-2200

LUNCH

A complimentary dinner will be served from 11:00 to 1:00 p.m.

AUCTIONEER

Doug Dieterle.....605-788-2963

SALE CONSULTANT

Dan Piroutek, Tri-State Livestock News
.....(605) 544-3316 • (c) 605-685-4556

SALE DAY RINGMEN

Ryan Casteel, Cattle Business Weekly
.....605-423-6000

Gary Wall, Billings, MT406-208-8536

Don Ravellete, Cattle Business Weekly
.....605-685-5147

Brook Hershey
.....605-484-6681, Special Assignment

Ben Lawson
.....307-340-0488, Special Assignment

ABSENTEE BIDDING

Any Sale Person listed or
Dace Harper605-515-1535
Mason Dietterle605-580-5878

INTERNET VIEWING

Our sale will be broadcast on www.faithlivestock.com. Click on "Live Auctions" on sale day to watch the sale. Our catalog is also available on this website.

HERD HEALTH

All bulls will have proper health certificates. All bulls were given Vista Once, Vision 7 - Somunus in August. Heifers had the same round of shots as the bulls.

SEMEN RIGHTS

We are reserving 33% of semen rights on all bulls.

BREEDING GUARANTEE

All bulls have or will be checked and semen tested.

FEED RATION

We want to thank feed specialist Tyler Melroe, for his ration and guidance on growing the bulls. We feel more secure than ever that a bulls' balanced ration will keep them sound for their lifetime.

ADDITIONAL PERFORMANCE DATA

Yearling weights and scrotal measurements as well as carcass information will be available sale day.

TRUCKING AND BOARDING BULLS

Free trucking up to 350 miles or we will deduct \$100 from sale price of each bull if you haul on sale day. All bulls will be kept free of charge until April 8, 2019, at buyer's risk.

ANNOUNCEMENTS

All announcements from the sale block will take precedence over printed materials such as catalog or advertising.

FIRST BREEDING SEASON GUARANTEE

Any bull selling for \$2,500 or more will be covered for 50% by Sletten Angus if they are injured during their first breeding season. Breeding season is defined as the 60-day period following the first turnout of the bull. This is NOT mortality insurance.

Fifty percent (50%) of the purchase price, minus half the salvage value, will be given as credit toward a replacement bull, if we have one available, or as credit at next year's sale.

1. All injured bulls must be diagnosed by a licensed veterinarian.
2. We must be notified should injury occur and before the bull is sold for salvage. A copy of the salvage receipt must be sent to us.
3. All claims must be made by Sept. 1, 2019

Sletten Angus will not be responsible for more than half of the purchase price of the bull. Mortality insurance will still be available for those who wish to purchase it.

INSURANCE

Ray Trudeau from Martin-Trudeau Insurance Agency will be attending the sale and offering XL Catlin Livestock Mortality and Accident Sickness & Disease Infertility Coverage. 605-996-3106



Sletten Angus

BOX 615

FAITH, SOUTH DAKOTA 57626

605-967-2238

On behalf of Tammy, Jessica & myself, welcome to the 31st Annual Sletten Angus Bull Sale. Thank you for your consideration of Sletten Angus bulls and heifers.

It is very rewarding to us, to see our plan (program) coming together. We have never had a set of bulls so uniform in moderate birth weight, explosive growth and very high carcass traits.

A highlight from the summer was taking a road trip to Poky feeders in Scot City, Kansas in mid July. The Ulrichs and myself attended their open house. The Ulrichs steers were within 2 weeks of slaughter. Poky Feeders feed 85,000 head at a time. Not a ma & pa thing. It was very interesting listening to Joe Morgan, the feedlot owner talk about profitability in the feed yard. A lot of times the quality of the carcass is the difference between making money or losing money. He said cattle need to come in healthy, have good growth performance and marbling. The challenge I see for the cow-calf operator, is letting buyers, and feeders know what you have. I am starting to find ways of getting that done. I think through the Certified Angus targeting the brand and Top Dollar Angus programs is a good start. They will contact the right people and let them know what you're selling, when, and where.

As part of the National Angus Convention we toured the CAB headquarters in Wooster, Ohio. I didn't have any idea how big CAB is. Many employees, numerous big buildings filled with offices, kitchens, slaughter house, etc. Their dedication is to continue the demand for CAB.

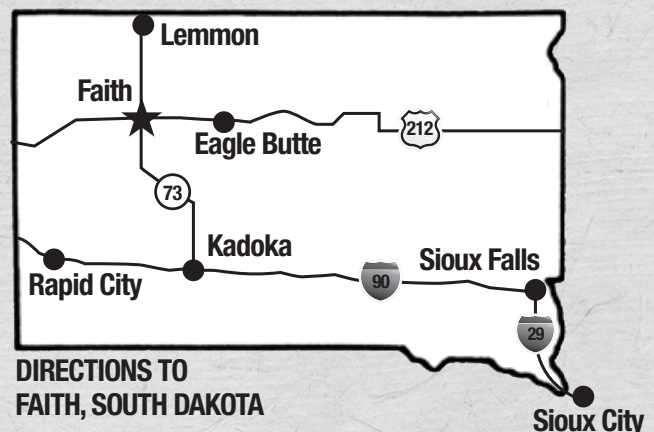
Looking back on 2018 we have to say it was a good year. We hope everybody can say that.

Thank you,
John, Tammy, & Jessica Sletten



EPD & VALUE PERCENTAGE RANKINGS

The percentage rank referred to in many of the sale catalog footnotes indicates how that particular bull ranks among the entire Angus breed for that particular trait.



Email: tbonebar@yahoo.com

REFERENCE SIREs

Baldrige Bronc

Birth Date: 01/06/2015 • 18229425

EF Complement 8088
 EF Commando 1366
 Riverbend Young Lucy W1470

 Styles Upgrade J59
 Baldrige Isabel Y69
 Baldrige Isabel T935



EPDs	BW	WW	YW	MILK	SC	CW	MARB	RE	FAT	\$W	\$F	\$B
	-2.6	+66	+113	+28	+53	+26	+75	+50	+0.047	+75.12	+67.25	+101.91



SydGen Enhance

Birth Date: 01/27/2015 • 18170041

SydGen Googol
 SydGen Exceed 3223
 SydGen Forever Lady 1255

 SydGen Liberty GA 8627
 SydGen Rita 2618
 Fox Run Rita 9308

EPDs	BW	WW	YW	MILK	SC	CW	MARB	RE	FAT	\$W	\$F	\$B
	+5	+74	+143	+34	+1.71	+77	+1.23	+86	+0.007	+78.92	+140.53	+224.27

KCF Bennett TheRock A473

Birth Date: 10/08/2013 • 17849954

Nichols Extra K205
 KCF Bennett Southside
 KCF Miss 208 S11

 GAR-EGL Protege
 KCF Miss Protege W148
 Breela of Conanga 3991



EPDs	BW	WW	YW	MILK	SC	CW	MARB	RE	FAT	\$W	\$F	\$B
	+1.7	+81	+144	+19	+1.95	+62	+1.26	+58	+0.005	+69.28	+105.61	+175.87

REFERENCE SIRES

Angus Hill Steadfast 854B

Birth Date: 11/17/2014 • 18060260

A A R Ten X 7008 S A
V A R Discovery 2240
 Deer Valley Rita 0308

G A R New Design 5050
G A R 5050 New Design 0546
 DRMCTR 111 Rita 6108



EPDs	BW	WW	YW	MILK	SC	CW	MARB	RE	FAT	\$W	\$F	\$B
	-2.1	+58	+114	+39	+1.38	+50	+1.34	+0.91	-0.020	+70.86	+80.03	+173.92



HA Cowboy Up 5405

Birth Date: 01/30/2015 • 18286467

KG Solution 0018
HA Outside 3008
 HA Ever Lady 1575

Sitz Upward 307R
HA Blackcap Lady 1602
 HA Blackcap Lady 5515

EPDs	BW	WW	YW	MILK	SC	CW	MARB	RE	FAT	\$W	\$F	\$B
	+2.5	+77	+139	+8	+1.17	+68	+0.26	+0.67	-0.012	+47.09	+114.11	+166.65

GAR Sure Fire

Birth Date: 02/05/2012 • 17328461

Mytty In Focus
Connealy In Sure 8524
 Entreena of Conanga 657

GAR New Design 5050
Chair Rock 5050 GAR 8086
 Chair Rock Grid Maker 2107



EPDs	BW	WW	YW	MILK	SC	CW	MARB	RE	FAT	\$W	\$F	\$B
	-0.4	+57	+107	+30	+2.44	+47	+1.35	+0.77	+0.030	+64.62	+59.81	+154.69

REFERENCE SIRES

SF Speedway A187

Birth Date: 01/23/2013 • 17470682

S S Objective T510 OT26

G A R Objective 7125

G A R 1407 New Design 1463

Gardens Next Wave HE17

SF Tiara X151

Rimrock Tiara 405



EPDs	BW	WW	YW	MILK	SC	CW	MARB	RE	FAT	\$W	\$F	\$B
	+5	+75	+129	+26	+1.75	+57	+83	+86	-.010	+75.30	+102.80	+181.15



HIGH PRIME 4037

Birth Date: 02/03/2008 • 16047404

GAR Precision 1680

CA Future Direction 5321

CA Miss Power Fix 308

B/R New Design 036

High Designer Lady 603

RRR 1184 Cruz 151 SC 1676

EPDs	BW	WW	YW	MILK	SC	CW	MARB	RE	FAT	\$W	\$F	\$B
	+1.7	+56	+93	+22	+1.11	+58	+86	+70	+0.002	+47.84	+60.92	+183.42

Basin Excitement

Birth Date: 12/15/2004 • 15056826

Gardens Expedition

Basin Expedition R156

Basin Primrose Lady 5287

Vermilion Payweight J847

Basin Lady S532 AK

Basin Lady 306E



EPDs	BW	WW	YW	MILK	SC	CW	MARB	RE	FAT	\$W	\$F	\$B
	+0	+69	+121	+24	+69	+44	+14	+56	+0.026	+84.16	+87.80	+121.99

REFERENCE SIREs

Bushs Easy Decision 98

Birth Date: 02/07/2013 • 17649083

S A V Final Answer 0035

Vin-Mar O'Reilly Factor

Vin-Mar Edella 2827

Bushs Big Time 452

Bushs Big Blackbird 7885

Bushs Dakota Blackbird 4763



EPDs	BW	WW	YW	MILK	SC	CW	MARB	RE	FAT	\$W	\$F	\$B
	+2.9	+83	+147	+24	+77	+62	+61	+67	+0.009	+66.87	+138.31	+189.62



EPDs	BW	WW	YW	MILK	SC	CW	MARB	RE	FAT	\$W	\$F	\$B
	+2.0	+42	+80	+21	+52	+29	+43	+33	+0.028	+33.52	+44.12	+108.40

KR Cadillac Jack

Birth Date: 01/20/2014 • 17954398

Silveiras El Capitan 6510

CFCC Black Jack 001

CFCC Fantasia Dateline 633

Connealy Network

WK Blackbird 5066

TC Blackbird 0127

Mr JT Apollo 620

Birth Date: 02/17/2016 • 18423677

EPDs	BW	WW	YW	MILK	CW	MARB	RE	FAT	\$W	\$F	\$B
	+7	+68	+119	+23	+54	-.13	+55	+0.005	+66.62	+80.79	+117.25

Koupal Juneau 797

Kramers Apollo 317

Kramers Evergreen Erica 1204

Sitz Traveler 6802

Miss JT Precious Lady 030

Miss JT Precise 575

Pine Creek Investment 6198J

Birth Date: 03/24/2016 • 18701667

EPDs	BW	WW	YW	MILK	CW	MARB	RE	FAT	\$W	\$F	\$B
	+7	+49	+83	+19	+25	+28	+39	+0.001	+45.36	+42.60	+94.15

Sitz Investment 660Z

Pine Creek Investment 4213J

PCAR Lady Bell 0354

Keslers Frontman R001

PCAR Sercial Lady 2031J

Miss JT Special Lady 464

Top Dollar Angus Feeder Calf Program



Top Dollar Angus is a genetic-certification and marketing company focused exclusively on the top 25 percent of the industry in carcass and growth Angus and Red Angus-influenced feeder cattle. Top Dollar Angus is a program similar to other popular branded-beef programs, except that Top Dollar Angus does its branding in the feeder cattle and calf market.

Qualified herds must have two or more generations of Angus (Black or Red) genetics with growth and carcass traits objectively ranking in the top 25 percent of the breed based on documented historical sire use. DNA evaluation conducted by Zoetis or GeneSeek is another workable method to qualify. Once your cattle have met the necessary requirements, they will be marketed under the Top Dollar Angus brand and logo, and will be promoted aggressively to a large number of feed yards and buyers. In today's market, Top Dollar Angus cattle are seeing premiums ranging from \$30 to \$70 per head above the average market.

Why the premium? Cattle feeders know that Top Dollar Angus cattle perform better and have higher grid-based carcass rewards compared to other cattle. This puts more dollars per head into the cattle feeder's pocket, which can be passed back to the producer in the form of premiums paid above market price.

Top Dollar Angus helps take the guess work and surprises out of growing and feeding cattle. Feed yards are tired of unpredictable performance and wide-ranging profitability results from group to group on cattle they purchase. Cattle often look the same and have the same colored hides, but are very different genetically. That's why the genetic certification of high-end Angus and Red Angus feeder cattle is here! The industry must differentiate the best Angus and Red Angus genetics from average cattle, and that's what Top Dollar Angus will do for you!

If you have consistently invested in high-performance Angus or Red Angus genetics, Top Dollar Angus will make your cattle stand out from the pack and get you the premiums you deserve. No matter how you market your cattle, our goal is to create more demand and higher prices for your calves.



Kenny Stauffer, general manager
kenny@topdollarangus.com
308-641-0429
www.topdollarangus.com

1**Mr JT Bronc 852**

Birth Date: 02/22/2018 • 19089323



Lot 1

EF Commando 1366
Baldrige Bronc
 Baldrige Isabel Y69
 AAR Ten X 7008 SA
Miss JT Lady of X 455
 Miss JT Sidney 608

PRODUCTION					MATERNAL		
CED	BW	WW	YW	DMI	HP	CEM	MILK
+17	-2.0	+81	+134	+67	+12.5	+14	+33

CARCASS		\$VALUES					
MARB	RE	\$W	\$F	\$G	\$QG	\$YG	\$B
+82	+77	+96.06	+98.93	+46.71	+41.40	+5.31	+152.86

- BW: 81#, 205 day wt: 732#
- Heifer Bull
- Top 1% CED, WW, \$W
- Top 2% WW
- Top 3% BW
- Top 4% CEM, \$F
- Top 5% MILK
- Top 10% Doc.
- Top 15% RE, \$G, \$QG, \$B

**2****Mr JT Bronc 818**

Birth Date: 02/08/2018 • 19089334



EF Commando 1366
Baldrige Bronc
 Baldrige Isabel Y69
 WMR Timeless 458
Miss JT Lady of Time 203
 Miss JT Becky 506

PRODUCTION					MATERNAL		
CED	BW	WW	YW	DMI	HP	CEM	MILK
+11	-1.1	+64	+111	+22	+14.2	+12	+25

CARCASS		\$VALUES					
MARB	RE	\$W	\$F	\$G	\$QG	\$YG	\$B
+79	+82	+67.71	+76.13	+45.79	+40.60	+5.19	+144.93

- BW: 70#, Adj. 205 day wt: 671#
- Heifer Bull
- Top 10% BW
- Top 15% WW, HP, CEM, RE, \$G
- Top 20% YW, MB, \$F, \$QG

**3****Mr JT Bronc 829**

Birth Date: 02/13/2018 • 19089318



EF Commando 1366
Baldrige Bronc
 Baldrige Isabel Y69
 Silveiras Conversion 8064
Miss JT Classy Lady 496
 Miss JT Lady of Traveler 857

PRODUCTION					MATERNAL		
CED	BW	WW	YW	DMI	HP	CEM	MILK
+10	+1.3	+70	+112	+21	+8.9	+9	+28

CARCASS		\$VALUES					
MARB	RE	\$W	\$F	\$G	\$QG	\$YG	\$B
+61	+47	+77.64	+73.81	+38.33	+35.01	+3.32	+127.43

- BW: 80#, Adj. 205 day wt: 746#
- Calving ease
- 108 W Ratio
- Top 2% \$W
- Top 10% WW
- Top 20% CED, YW, MILK, \$F

4**Mr JT Bronc 846**

Birth Date: 02/18/2018 • 19089319



EF Commando 1366
Baldrige Bronc
 Baldrige Isabel Y69
 Silveiras Conversion 8064
Miss JT Classy Lady 491
 Miss JT Connie 8103

PRODUCTION					MATERNAL		
CED	BW	WW	YW	DMI	HP	CEM	MILK
+10	+1.3	+62	+111	+12	+12	+11	+32

CARCASS		\$VALUES					
MARB	RE	\$W	\$F	\$G	\$QG	\$YG	\$B
+59	+64	+71.40	+79.65	+34.75	+34.27	+4.48	+139.98

- BW: 86#, Adj. 205 day wt: 699#
- Claving ease
- Top 5% \$W
- Top 10% MILK
- Top 15% \$F
- Top 20% WW, YW

**5****Mr JT Bronc 860**

Birth Date: 02/25/2018 • 19089315



EF Commando 1366
Baldrige Bronc
 Baldrige Isabel Y69
 AAR Ten X 7008 SA
Miss JT Lady of X 581
 Miss JT Skymere 066

PRODUCTION					MATERNAL		
CED	BW	WW	YW	DMI	HP	CEM	MILK
+13	-1	+78	+135	+83	+11	+13	+29

CARCASS		\$VALUES					
MARB	RE	\$W	\$F	\$G	\$QG	\$YG	\$B
+60	+40	+81.79	+99.98	+31.64	+34.62	-2.98	+150.01

- BW: 77#, Adj. 205 day wt: 738#
- Heifer bull
- Top 1% \$W
- Top 2% WW, YW
- Top 4% \$F
- Top 10% CED, CEM



6**Mr JT Bronc 817**

Birth Date: 02/08/2018 • 19089336

*Dam of Lot 6*

EF Commando 1366
Baldrige Bronc
 Baldrige Isabel Y69
 WMR Timeless 458
Miss JT Lady of Time 203
 Miss JT Darma 500

PRODUCTION				
CED	BW	WW	YW	DMI
+16	-1.6	+59	+99	+1.02

MATERNAL		
HP	CEM	MILK
+9.8	+11	+30

CARCASS	
MARB	RE
+0.84	+0.66

\$VALUES						
\$W	\$F	\$G	\$QG	\$YG	\$B	
+71.06	+40.87	+44.41	+41.88	+2.53	+117.72	

- BW: 75#, Adj. 205 day wt: 720#
- Heifer Bull
- Top 1% CED
- Top 4% SC
- Top 5% BW
- Top 15% MILK, MB, \$QG

7**Mr JT Bronc 859**

Birth Date: 02/25/2018 • 19089339

EF Commando 1366
Baldrige Bronc
 Baldrige Isabel Y69
 Connealy Packer 547
Miss JT Packers Lady 819
 Miss JT Becky 506

PRODUCTION				
CED	BW	WW	YW	DMI
+14	-1.1	+64	+102	+0

MATERNAL		
HP	CEM	MILK
+13.3	+16	+32

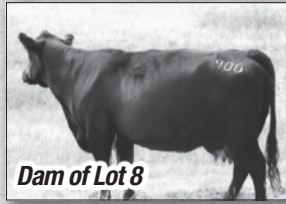
CARCASS	
MARB	RE
+0.44	+0.65

\$VALUES						
\$W	\$F	\$G	\$QG	\$YG	\$B	
+75.65	+63.66	+31.64	+28.37	+3.27	+124.08	

- BW: 74#, Adj. 205 day wt: 705#
- Heifer Bull
- Top 1% CEM
- Top 3% \$W
- Top 4% CED
- Top 10% MILK
- Top 15% WW

**8****Mr JT Bronc 819**

Birth Date: 02/10/2018 • 19089337

*Dam of Lot 8*

EF Commando 1366
Baldrige Bronc
 Baldrige Isabel Y69
 Sitz Traveler 6802
Miss JT Lady of Traveler 900
 Miss JT Precise 575

PRODUCTION				
CED	BW	WW	YW	DMI
+9	+4	+56	+94	+5.58

MATERNAL		
HP	CEM	MILK
+13.8	+13	+31

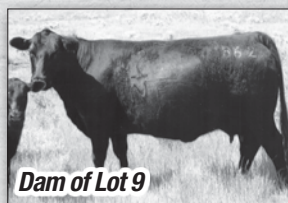
CARCASS	
MARB	RE
+0.58	+0.51

\$VALUES						
\$W	\$F	\$G	\$QG	\$YG	\$B	
+67.24	+42.76	+37.87	+33.85	+4.02	+126.50	

- BW: 82#, Adj. 205 day wt: 727#
- Calving Ease
- Top 10% CEM, MILK, \$W
- Top 20% HP

9**Mr JT Bronc 825**

Birth Date: 02/12/2018 • 19089221

*Dam of Lot 9*

EF Commando 1366
Baldrige Bronc
 Baldrige Isabel Y69
 Hyline Right Time 338
Miss JT Poker Alice 862
 Miss JT Poker Alice 266

PRODUCTION				
CED	BW	WW	YW	DMI
+21	-3.6	+48	+84	+2.27

MATERNAL		
HP	CEM	MILK
+12.3	+17	+30

CARCASS	
MARB	RE
+0.41	+0.72

\$VALUES						
\$W	\$F	\$G	\$QG	\$YG	\$B	
+62.26	+36.53	+34.23	+27.07	+7.16	+87.15	

- BW: 62#, Adj. 205 day wt: 683#
- Heifer Bull
- Top 1% CED, BW, CEM
- Top 15% MILK
- Top 13% TEND.

10**Mr JT Bronc 853**

Birth Date: 02/22/2018 • 19089321

EF Commando 1366
Baldrige Bronc
 Baldrige Isabel Y69
 Connealy Confidence 0100
Miss JT Proud Lady 472
 Miss JT Total Lady 616

PRODUCTION				
CED	BW	WW	YW	DMI
+14	-1.0	+56	+89	+0.45

MATERNAL		
HP	CEM	MILK
+12.6	+16	+30

CARCASS	
MARB	RE
+0.65	+0.22

\$VALUES						
\$W	\$F	\$G	\$QG	\$YG	\$B	
+70.26	+36.29	+31.54	+36.34	-4.80	+107.29	

- BW: 77#, Adj. 205 day wt: 674#
- Heifer Bull
- Top 1% CEM
- Top 4% CED
- Top 10% BW, \$W
- Top 15% MILK

11 Mr JT Enhance 811

Birth Date: 01/31/2018 • 19093544



SydGen Exceed 3223
SydGen Enhance
 SydGen Rita 2618
 HF Thunderbird 146Y
Miss JT Lady Bird 673
 Miss JT Amber 057

PRODUCTION					MATERNAL		
CED	BW	WW	YW	DMI	HP	CEM	MILK
+13	+1.2	+69	+129	+25	+11.7	+10	+30

CARCASS		SVALUES					
MARB	RE	\$W	\$F	\$G	\$QG	\$YG	\$B
+1.09	+0.66	+69.58	+106.80	+51.86	+47.75	+4.11	+186.58

- BW: 82#, 205 day wt: 698#
- Calving Ease
- Top 1% \$B
- Top 2% \$F, MH
- Top 4% RADG, YW, DOC \$QG
- Top 5% MB, \$G
- Top 10% CED, WW, CW, \$W



12 Mr JT Enhance 816

Birth Date: 02/07/2018 • 19093546



SydGen Exceed 3223
SydGen Enhance
 SydGen Rita 2618
 SF Speedway A 187
Miss JT Lindsay 609
 Miss JT Poker Alice 825

PRODUCTION					MATERNAL		
CED	BW	WW	YW	DMI	HP	CEM	MILK
+5	+2.3	+60	+118	-.34	+9	+6	+30

CARCASS		SVALUES					
MARB	RE	\$W	\$F	\$G	\$QG	\$YG	\$B
+1.27	+0.65	+58.54	+104.05	+56.40	+51.50	+4.90	+197.05

- BW: 80#, Adj. 205 day wt: 677#
- Calving Ease
- Top 1% RADG, \$B
- Top 2% MB, \$G, \$QG
- Top 3% \$F
- Top 10% YW, DMI, YH, SC, CW



13 Mr JT Enhance 863

Birth Date: 02/26/2018 • 19093551



SydGen Exceed 3223
SydGen Enhance
 SydGen Rita 2618
 BC Matrix 4132
Miss JT May Flower 872
 Miss JT Precise 575

PRODUCTION					MATERNAL		
CED	BW	WW	YW	DMI	HP	CEM	MILK
+11	+6	+62	+112	+12	+11.8	+10	+23

CARCASS		SVALUES					
MARB	RE	\$W	\$F	\$G	\$QG	\$YG	\$B
+0.48	+0.64	+64.63	+81.56	+34.91	+30.07	+4.84	+142.29

- BW: 80#, Adj. 205 day wt: 683#
- Heifer Bull
- Top 10% DOC
- Top 15% CED, RADG, SC \$W, \$F
- Top 20% WW, YW

14 Mr JT The Rock 855

Birth Date: 02/24/2018 • 19089278



KCF Bennett Southside
KCF Bennett TheRock A473
 KCF Miss Protege W148
 SQ Credence 67S
Miss JT Creda 023
 Miss JT Sidney 608

PRODUCTION					MATERNAL		
CED	BW	WW	YW	DMI	HP	CEM	MILK
+10	+2.2	+79	+137	+1.08	+6.5	+12	+25

CARCASS		SVALUES					
MARB	RE	\$W	\$F	\$G	\$QG	\$YG	\$B
+0.95	+0.54	+73.72	+98.11	+46.29	+44.81	+1.48	+170.09

- BW: 88#, Adj. 205 day wt: 786#
- A favorite since birth
- Top 1% YH, MH
- Top 2% WW, YW
- Top 4% \$W, \$F
- Top 5% \$B
- Top 10% MB, \$QG



15 Mr JT The Rock 858

Birth Date: 02/25/2018 • 19089272



KCF Bennett Southside
KCF Bennett TheRock A473
 KCF Miss Protege W148
 Pine Creek Image Maker 7131
Miss JT Lady of Image 9704
 Miss JT Lady of Vision 704

PRODUCTION					MATERNAL		
CED	BW	WW	YW	DMI	HP	CEM	MILK
+6	+2.1	+66	+120	+0.88	+9.3	+6	+23

CARCASS		SVALUES					
MARB	RE	\$W	\$F	\$G	\$QG	\$YG	\$B
+0.87	+0.32	+61.06	+78.52	+46.84	+42.75	+4.09	+134.05

- BW: 68#, Adj. 205 day wt: 809#
- Calving Ease
- Twin
- Heaviest 205 day Wt
- Top 1% DOC
- Top 10% YW, SC
- Top 15% WW, MB \$F, \$G, \$QG



16 Mr JT The Rock 823

Birth Date: 02/11/2018 • 19089266



KCF Bennett Southside
KCF Bennett TheRock A473
 KCF Miss Protege W148

Connealy Consensus 7229
Miss JT Connie 349
 Miss JT Fancy Lady 8801

PRODUCTION					MATERNAL		
CED	BW	WW	YW	DMI	HP	CEM	MILK
+11	+1.1	+73	+127	+37	+7.2	+11	+18

CARCASS		\$VALUES					
MARB	RE	\$W	\$F	\$G	\$QG	\$YG	\$B
+7.0	+5.6	+67.63	+97.33	+40.86	+37.98	+2.88	+162.89

- BW: 88#, Adj. 205 day wt: 670#
- Top 4% WW, YW
- Top 5% \$F
- Top 10% #B



17 Mr JT The Rock 864

Birth Date: 02/28/2018 • 19089279



KCF Bennett Southside
KCF Bennett TheRock A473
 KCF Miss Protege W148

SQ Credence 67S
Miss JT Creda 022
 Miss JT Poker Alice 603

PRODUCTION					MATERNAL		
CED	BW	WW	YW	DMI	HP	CEM	MILK
+8	+2.1	+68	+115	+65	+11.2	+11	+18

CARCASS		\$VALUES					
MARB	RE	\$W	\$F	\$G	\$QG	\$YG	\$B
+9.5	+4.9	+57.54	+72.05	+46.78	+44.81	+1.97	+160.54

- BW: 86#, Adj. 205 day wt: 718#
- Calving Ease
- Top 1% DOC
- Top 4% YH, MH
- Top 10% WW, MB, SQG, \$B



18 Mr JT The Rock 804

Birth Date: 01/26/2018 • 19239927



KCF Bennett Southside
KCF Bennett TheRock A473
 KCF Miss Protege W148

KCF Bennett Absolute
Miss JT Amy 624
 Miss JT Forward Lady 907

PRODUCTION					MATERNAL		
CED	BW	WW	YW	DMI	HP	CEM	MILK
+9	+1	+70	+124	+1.26	+15.7	+10	+27

CARCASS		\$VALUES					
MARB	RE	\$W	\$F	\$G	\$QG	\$YG	\$B
+1.27	+5.8	+71.92	+75.56	+55.25	+51.50	+3.75	+158.21

- BW: 74#, Adj. 205 day wt: 715#
- Heifer Bull
- Top 2% MB, \$QG
- Top 3% \$G
- Top 5% \$W
- Top 10% WW, YW, HP
- Top 15% YH, CW, \$B



19 Mr JT Rock 834

Birth Date: 02/14/2018 • 19089271



KCF Bennett Southside
KCF Bennett TheRock A473
 KCF Miss Protege W148

GAR Ultimate
Miss JT Northern Lady 060
 Miss JT Northern View 741

PRODUCTION					MATERNAL		
CED	BW	WW	YW	DMI	HP	CEM	MILK
+11	+1.5	+65	+119	+1.15	+8.9	+11	+27

CARCASS		\$VALUES					
MARB	RE	\$W	\$F	\$G	\$QG	\$YG	\$B
+9.5	+5.8	+68.57	+71.82	+50.09	+44.81	+5.28	+142.40

- BW: 88#, Adj. 205 day wt: 656#
- Top 4% DOC
- Top 10% YW, SC, MB, \$W, \$G, \$QG
- Top 15% WW



20 Mr JT The Rock 851

Birth Date: 02/21/2018 • 19089280



KCF Bennett Southside
KCF Bennett TheRock A473
 KCF Miss Protege W148

Hoover Dam
Miss JT Special Lady 008
 Miss JT Special Lady 587

PRODUCTION					MATERNAL		
CED	BW	WW	YW	DMI	HP	CEM	MILK
+6	+4	+59	+108	+89	+7.3	+5	+23

CARCASS		\$VALUES					
MARB	RE	\$W	\$F	\$G	\$QG	\$YG	\$B
+1.35	+3.7	+61.55	+60.44	+52.83	+53.29	-.46	+148.74

- BW: 77#, Adj. 205 day wt: 619#
- Heifer Bull
- Top 1% MB, \$QG
- Top 3% DOC
- Top 4% \$G
- Top 5% SC



21 Mr JT The Rock 803
 Birth Date: 01/24/2018 • 19089259



Lot 21

KCF Bennett Southside
KCF Bennett TheRock A473
 KCF Miss Protege W148
 SF Speedway A187
Miss JT Lindsay 605
 Miss JT Dana 229

PRODUCTION					MATERNAL		
CED	BW	WW	YW	DMI	HP	CEM	MILK
+8	+2.4	+64	+109	+75	+11.4	+12	+18

CARCASS		\$VALUES					
MARB	RE	\$W	\$F	\$G	\$QG	\$YG	\$B
+1.33	+49	+56.55	+61.51	+56.14	+52.84	+3.30	+141.79

- BW: 82#, 205 day wt: 665#
- Calving Ease
- Top 1% MB, \$QG
- Top 2% \$G
- Top 15% WW, CEM



22 Mr JT The Rock 802
 Birth Date: 01/22/2018 • 19089256



KCF Bennett Southside
KCF Bennett TheRock A473
 KCF Miss Protege W148
 Kramers Apollo 317
Miss JT Amy 627
 Miss JT Lady of Travel 8551

PRODUCTION					MATERNAL		
CED	BW	WW	YW	DMI	HP	CEM	MILK
+15	-1.3	+57	+104	+64	+9.9	+11	+25

CARCASS		\$VALUES					
MARB	RE	\$W	\$F	\$G	\$QG	\$YG	\$B
+89	+34	+62.48	+59.43	+44.29	+43.38	+9.1	+145.82

- BW: 64#, Adj. 205 day wt: 666#
- Heifer Bull
- Top 2% CED
- Top 10% BW, DOC
- Top 15% SC, MB, \$QG



23 Mr JT The Rock 821
 Birth Date: 02/11/2018 • 19089268



KCF Bennett Southside
KCF Bennett TheRock A473
 KCF Miss Protege W148
 VDAR Really Windy 4097
Miss JT Winnie 371
 Miss JT Pinta 132

PRODUCTION					MATERNAL		
CED	BW	WW	YW	DMI	HP	CEM	MILK
+13	+1.0	+70	+122	+50	+11.1	+10	+13

CARCASS		\$VALUES					
MARB	RE	\$W	\$F	\$G	\$QG	\$YG	\$B
+1.07	+58	+56.39	+87.15	+51.93	+47.42	+4.51	+161.45

- BW: 84#, Adj. 205 day wt: 558#
- Calving Ease
- Top 4% DOC, \$QG
- Top 5% MB, \$G
- Top 10% WW, YW, MH, \$F, \$B



24 Mr JT The Rock 836
 Birth Date: 02/15/2018 • 19089267



Lot 24

KCF Bennett Southside
KCF Bennett TheRock A473
 KCF Miss Protege W148
 WMR Timeless 458
Miss JT Lady of Time 321
 Miss JT Poker Alice 6324

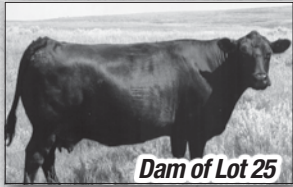
PRODUCTION					MATERNAL		
CED	BW	WW	YW	DMI	HP	CEM	MILK
+12	+4	+64	+112	+84	+12.4	+11	+14

CARCASS		\$VALUES					
MARB	RE	\$W	\$F	\$G	\$QG	\$YG	\$B
+1.13	+37	+55.45	+65.39	+50.44	+48.65	+1.79	+125.60

- BW: 85#, 205 day wt: 672#
- Calving Ease
- Top 3% \$QB
- Top 4% MB
- Top 10% CED, \$G
- Top 15% WW

25**Mr JT The Rock 845**

Birth Date: 02/18/2018 • 19089281

*Dam of Lot 25*

KCF Bennett Southside
KCF Bennett TheRock A473
 KCF Miss Protege W148
 Hoover Dam
Miss JT Lady of Travel 011
 Miss JT Miriam 5103

PRODUCTION				
CED	BW	WW	YW	DMI
+11	+2.1	+61	+108	+87

MATERNAL		
HP	CEM	MILK
+9.9	+11	+25

CARCASS	
MARB	RE
+.72	+.80

\$VALUES						
\$W	\$F	\$G	\$QG	\$YG	\$B	
+60.20	+59.38	+45.45	+38.58	+6.87	+153.27	

- BW: 90#, Adj. 205 day wt: 630#
- Strong maternal lines
- Top 10% YH
- Top 15% CED, CW, RE, \$B
- Top 20% FT, \$W, \$G

**26****Mr JT The Rock 809**

Birth Date: 01/31/2018 • 19089263

KCF Bennett Southside
KCF Bennett TheRock A473
 KCF Miss Protege W148
 Sedgwicks Outlaws 538W
Miss JT Kitty 658
 Miss JT Sidney 608

PRODUCTION				
CED	BW	WW	YW	DMI
+5	+2.2	+67	+110	+51

MATERNAL		
HP	CEM	MILK
+5.6	+9	+15

CARCASS	
MARB	RE
+.45	+.54

\$VALUES						
\$W	\$F	\$G	\$QG	\$YG	\$B	
+53.97	+66.10	+37.50	+28.77	+8.73	+126.15	

- BW: 74#, Adj. 205 day wt: 593#
- Calving Ease
- Top 2% FT, MH
- Top 10% WW, \$YG

**27****Mr T Steadfast 835**

Birth Date: 02/15/2018 • 19089289

VAR Discovery 2240
Angus Hill Steadfast 854B
 GAR 5050 New Design 0546
 Connealy All Around
Miss JT Alli 983
 Miss JT Becky 523

PRODUCTION				
CED	BW	WW	YW	DMI
+5	+2.5	+66	+110	+17

MATERNAL		
HP	CEM	MILK
+9.8	+12	+31

CARCASS	
MARB	RE
+.59	+.81

\$VALUES						
\$W	\$F	\$G	\$QG	\$YG	\$B	
+67.95	+73.77	+41.47	+34.27	+7.20	+158.54	

- BW: 83#, Adj. 205 day wt: 743#
- Calving Ease
- Top 10% DOC, MILK, \$W, \$B
- Top 15% WW, CEM, MH

**28****Mr T Steadfast 813**

Birth Date: 02/04/2018 • 19085970



VAR Discovery 2240
Angus Hill Steadfast 854B
 GAR 5050 New Design 0546
 Connealy All Around
Miss JT Polly 981
 Miss JT Polly 377

PRODUCTION				
CED	BW	WW	YW	DMI
+11	+3	+63	+107	+59

MATERNAL		
HP	CEM	MILK
+8.7	+14	+26

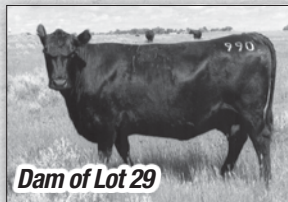
CARCASS	
MARB	RE
+1.25	+.68

\$VALUES					
\$W	\$F	\$G	\$QG	\$YG	\$B
+66.70	+61.73	+60.43	+51.02	+9.41	+150.69

- BW: 78#, Adj. 205 day wt: 671#
- Calving Ease
- Top 1% \$G
- Top 2% MB, \$QG
- Top 3% FT
- Top 4% DOC
- Top 5% \$YG

**29****Mr T Steadfast 848**

Birth Date: 02/19/2018 • 19089290

*Dam of Lot 29*

VAR Discovery 2240
Angus Hill Steadfast 854B
 GAR 5050 New Design 0546
 Connealy All Around
Miss JT Delia Dawn 990
 Miss JT Fancy Lady 6801

PRODUCTION				
CED	BW	WW	YW	DMI
+7	+2.1	+51	+94	+32

MATERNAL		
HP	CEM	MILK
+14.2	+14	+39

CARCASS	
MARB	RE
+.89	+.70

\$VALUES					
\$W	\$F	\$G	\$QG	\$YG	\$B
+57.64	+51.64	+50.09	+43.38	+6.71	+148.52

- BW: 88#, Adj. 205 day wt: 723#
- Top 1% MILK
- Top 2% DOC,
- Top 4% CEM
- Top 10% \$G
- Top 15% HP, MB, \$QB

**30****Mr JT Cowboy UP 800**

Birth Date: 02/02/2018 • 19089348

HA Outside 3008
HA Cowboy Up 5405
 HA Blackcap Lady 1602
 Sitz Traveler 6802
Miss JT Precious Lady 030
 Miss JT Precise 575

PRODUCTION				
CED	BW	WW	YW	DMI
+3	+4.1	+58	+95	+31

MATERNAL		
HP	CEM	MILK
+12.5	+9	+18

CARCASS	
MARB	RE
+.40	+.20

\$VALUES					
\$W	\$F	\$G	\$QG	\$YG	\$B
+45.53	+48.68	+26.02	+26.49	-.47	+112.44

- BW: 88#, Adj. 205 day wt: 734#
- WN Ratio 106
- As of Dec 1st he is the top growth bull
- Dam is a top producer of High growth, and high volume offspring

31**Mr JT Cowboy UP 857**

Birth Date: 02/25/2018 • 19089345



HA Outside 3008
HA Cowboy Up 5405
 HA Blackcap Lady 1602
 Stevenson Cattleman R142
Miss JT Connie 898
 Miss JT Connie 610

PRODUCTION				
CED	BW	WW	YW	DMI
+8	+2.4	+68	+127	+50

MATERNAL		
HP	CEM	MILK
+11.1	+14	+16

CARCASS	
MARB	RE
+27	+35

\$VALUES						
\$W	\$F	\$G	\$QG	\$YG	\$B	
+49.33	+98.50	+23.20	+20.39	+2.81	+135.22	

- BW: 83#, Adj. 205 day wt: 786#
- Calving Ease
- WN Ratio 114
- Top 4% YW, CEM, \$F
- Top 10% WW, MW

33**Mr JT Cowboy UP 837**

Birth Date: 02/16/2018 • 19089324



HA Outside 3008
HA Cowboy Up 5405
 HA Blackcap Lady 1602
 RB Active Duty 010
Miss JT Demi 336
 Miss JT Total Lady 125

PRODUCTION				
CED	BW	WW	YW	DMI
+8	+6	+72	+124	+56

MATERNAL		
HP	CEM	MILK
+10.7	+7	+20

CARCASS	
MARB	RE
+53	+65

\$VALUES						
\$W	\$F	\$G	\$QG	\$YG	\$B	
+67.41	+88.32	+37.13	+32.12	+5.01	+146.02	

- BW: 80#, Adj. 205 day wt: 679#
- Calving Ease
- Top 5% WW
- Top 10% YW, \$W, \$F

**32****Mr JT Cowboy UP 839**

Birth Date: 02/17/2018 • 19089335



Lot 32

HA Outside 3008
HA Cowboy Up 5405
 HA Blackcap Lady 1602
 Basin Payweight 107S
Miss JT Double Pay 258
 Miss JT Double 04 626

PRODUCTION				
CED	BW	WW	YW	DMI
+2	+2.9	+62	+108	+46

MATERNAL		
HP	CEM	MILK
+8.1	+11	+10

CARCASS	
MARB	RE
+25	+81

\$VALUES						
\$W	\$F	\$G	\$QG	\$YG	\$B	
+36.92	+67.00	+28.90	+19.32	+9.58	+108.42	

- BW: 90#, 205 day wt: 721#
- Maternal bros. to the lot 2 bull last year
- Top 5% \$YG
- Top 10% MW
- Top 15% \$EN, RE, FAT
- Top 20% WW

34**Mr JT Cowboy UP 812**

Birth Date: 02/01/2018 • 19089344

HA Outside 3008
HA Cowboy Up 5405
 HA Blackcap Lady 1602
 Hoover Dam
Miss JT Pinta 132
 Miss JT Precise 572

PRODUCTION				
CED	BW	WW	YW	DMI
+14	-1.3	+49	+96	+47

MATERNAL		
HP	CEM	MILK
+9.2	+5	+25

CARCASS	
MARB	RE
+45	+62

\$VALUES						
\$W	\$F	\$G	\$QG	\$YG	\$B	
+48.59	+53.72	+35.76	+28.77	+6.99	+130.21	

- BW: 67#, Adj. 205 day wt: 616#
- Heifer Bull
- Top 4% CED
- Top 10% BW
- Top 15% FAT

35**Mr JT Cowboy UP 830**

Birth Date: 02/13/2018 • 19089333

HA Outside 3008
HA Cowboy Up 5405
 HA Blackcap Lady 1602
 Connealy Consensus 7229
Miss JT Concho 212
 Miss JT Echo 005

PRODUCTION				
CED	BW	WW	YW	DMI
+10	+1.4	+59	+102	+19

MATERNAL		
HP	CEM	MILK
+14.5	+10	+23

CARCASS	
MARB	RE
+21	+49

\$VALUES						
\$W	\$F	\$G	\$QG	\$YG	\$B	
+59.92	+63.40	+20.28	+17.17	+3.11	+109.62	

- BW: 84#, Adj. 205 day wt: 666#
- Calving Ease
- Top 15% HP
- Top 20% CED, DOC, \$W

36 Mr JT Pluto 888

Birth Date: 01/26/2018 • 19085972



Kramers Apollo 317
Mr JT Apollo 620
 Miss JT Precious Lady 030
 GAR Prophet
Miss JT Polly 656
 Miss JT Demi 333

PRODUCTION					MATERNAL		
CED	BW	WW	YW	DMI	HP	CEM	MILK
+3	+3.4	+88	+149	+71	+14.0	+9	+25

CARCASS		\$VALUES					
MARB	RE	\$W	\$F	\$G	\$QG	\$YG	\$B
+30	+61	+82.12	+122.94	+23.54	+21.85	+1.69	+168.07

- BW: 82#, Adj. 205 day wt: 777#
- Calving Ease
- Top 1% WW, YW, DOC, \$W, \$F
- Top 2% CW
- Top 10% \$B

37 Mr JT Pluto 808

Birth Date: 01/24/2018 • 19085973

Kramers Apollo 317
Mr JT Apollo 620
 Miss JT Precious Lady 030
 Silveiras S Sis GQ 2353
Miss JT Sis 677
 Miss JT Classy Lady 360

PRODUCTION					MATERNAL		
CED	BW	WW	YW	DMI	HP	CEM	MILK
+9	+1.5	+66	+114	+47	+13.6	+6	+21

CARCASS		\$VALUES					
MARB	RE	\$W	\$F	\$G	\$QG	\$YG	\$B
+41	+74	+65.75	+75.29	+32.83	+27.07	+5.76	+122.16

- BW: 82#, Adj. 205 day wt: 700#
- Calving Ease
- Top 10% \$W
- Top 15% WW, YW

38 Mr JT Pluto 801

Birth Date: 01/18/2018 • 19085971

Kramers Apollo 317
Mr JT Apollo 620
 Miss JT Precious Lady 030
 SF Speedway A187
Miss JT Lindsay 607
 Miss JT May Flower 872

PRODUCTION					MATERNAL		
CED	BW	WW	YW	DMI	HP	CEM	MILK
+9	+1.5	+68	+116	+83	+8.1	+0	+25

CARCASS		\$VALUES					
MARB	RE	\$W	\$F	\$G	\$QG	\$YG	\$B
-.32	+62	+70.87	+70.30	-11.80	-16.60	+4.80	+92.27

- BW: 79#, Adj. 205 day wt: 683#
- Calving Ease
- Extra Length
- Top 5% \$W
- Top 10% WW
- Top 15% YW

39 Mr JT Sure Fire 810

Birth Date: 01/29/2018 • 19089193



Connealy In Sure 8524
GAR Sure Fire
 Chair Rock 5050 GAR 8086
 SF Speedway A187
Miss JT Lindsay 610
 Miss JT Concho 212

PRODUCTION					MATERNAL		
CED	BW	WW	YW	DMI	HP	CEM	MILK
+12	+1.5	+76	+131	+58	+11.2	+14	+22

CARCASS		\$VALUES					
MARB	RE	\$W	\$F	\$G	\$QG	\$YG	\$B
+73	+66	+76.47	+98.65	+41.16	+38.84	+2.32	+168.79

- BW: 76#, Adj. 205 day wt: 716#
- Calving Ease
- Top 2% WW, SC, \$W
- Top 3% YW
- Top 4% CEM, \$F
- Top 5% \$B

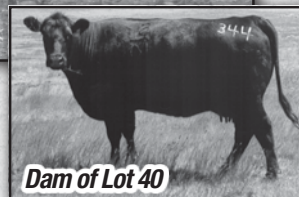


40 Mr JT Sure Fire 869

Birth Date: 03/06/2018 • 19089242



Lot 40



Dam of Lot 40

Connealy In Sure 8524
GAR Sure Fire
 Chair Rock 5050 GAR 8086
 RB Active Duty 010
Miss JT Demi 344
 Miss JT Echo 860

PRODUCTION					MATERNAL		
CED	BW	WW	YW	DMI	HP	CEM	MILK
+10	+1.9	+66	+117	+38	+11.3	+6	+28

CARCASS		\$VALUES					
MARB	RE	\$W	\$F	\$G	\$QG	\$YG	\$B
+98	+55	+74.08	+82.90	+44.61	+45.44	-.83	+163.34

- BW: 92#, Adj. 205 day wt: 799#
- A Top Growth Bull
- Top 3% \$W
- Top 10% MB, \$QG, \$B
- Top 15% WW, YW, \$F, CW



41 Mr JT Sure Fire 815

Birth Date: 02/07/2018 • 19089227



Connealy In Sure 8524
GAR Sure Fire
 Chair Rock 5050 GAR 8086
 WMR Timeless 458
Miss JT Lady of Time 433
 Miss JT Lady of Value 896

PRODUCTION					MATERNAL		
CED	BW	WW	YW	DMI	HP	CEM	MILK
+15	+2	+61	+103	+58	+9.7	+14	+27

CARCASS		\$VALUES					
MARB	RE	\$W	\$F	\$G	\$QG	\$YG	\$B
+74	+93	+70.20	+55.86	+45.14	+39.18	+5.96	+143.65

- BW: 77#, Adj. 205 day wt: 756#
- Heifer Bull
- Top 1% DOC
- Top 2% CED
- Top 4% CEM
- Top 5% SC
- Top 10% RE, \$W



44 Mr JT Sure Fire 856

Birth Date: 02/24/2018 • 19089238



Connealy In Sure 8524
GAR Sure Fire
 Chair Rock 5050 GAR 8086
 RB Active Duty 010
Miss JT Demi 331
 Miss JT Lady of Thunder 186

PRODUCTION					MATERNAL		
CED	BW	WW	YW	DMI	HP	CEM	MILK
+15	-1.3	+47	+82	+42	+13.9	+15	+34

CARCASS		\$VALUES					
MARB	RE	\$W	\$F	\$G	\$QG	\$YG	\$B
+92	+84	+66.14	+30.57	+52.40	+44.05	+8.35	+112.46

- BW: 68#, Adj. 205 day wt: 672#
- Heifer Bull
- Top 1% DOC
- Top 2% CED, CEM
- Top 3% SC
- Top 4% MILK
- Top 5% \$G
- Top 10% BW, RE, \$W, \$QG, \$YG

42 Mr JT Sure Fire 840

Birth Date: 02/17/2018 • 19089231



Connealy In Sure 8524
GAR Sure Fire
 Chair Rock 5050 GAR 8086
 RB Active Duty 010
Miss JT Demi 443
 Miss JT Lady of Travel 906

PRODUCTION					MATERNAL		
CED	BW	WW	YW	DMI	HP	CEM	MILK
+11	+1.8	+58	+101	+20	+15.1	+9	+31

CARCASS		\$VALUES					
MARB	RE	\$W	\$F	\$G	\$QG	\$YG	\$B
+52	+42	+64.85	+62.05	+30.60	+31.65	-1.05	+134.57

- BW: 86#, Adj. 205 day wt: 643#
- Calving Ease
- Top 5% SC
- Top 10% HP, MILK
- Top 15% \$W

45 Mr JT Sure Fire 829

Birth Date: 02/12/2018 • 19089239



Connealy In Sure 8524
GAR Sure Fire
 Chair Rock 5050 GAR 8086
 RB Active Duty 010
Miss JT Demi 339
 Miss JT Lady of Focus 892

PRODUCTION					MATERNAL		
CED	BW	WW	YW	DMI	HP	CEM	MILK
+16	-2.0	+55	+99	+44	+11.7	+12	+34

CARCASS		\$VALUES					
MARB	RE	\$W	\$F	\$G	\$QG	\$YG	\$B
+72	+66	+71.56	+55.59	+43.91	+38.58	+5.33	+144.60

- BW: 65#, Adj. 205 day wt: 724#
- Heifer Bull
- WN Ratio 105
- Top 1% CED, SC
- Top 3% BW
- Top 4% MILK
- Top 5% \$W



43 Mr JT Sure Fire 827

Birth Date: 02/13/2018 • 19089235



Connealy In Sure 8524
GAR Sure Fire
 Chair Rock 5050 GAR 8086
 RB Active Duty 010
Miss JT Demi 338
 Miss JT Dana 687

PRODUCTION					MATERNAL		
CED	BW	WW	YW	DMI	HP	CEM	MILK
+10	-2	+51	+100	+15	+12.9	+9	+29

CARCASS		\$VALUES					
MARB	RE	\$W	\$F	\$G	\$QG	\$YG	\$B
+1.12	+31	+57.86	+66.28	+47.66	+48.46	-.80	+142.06

- BW: 75#, Adj. 205 day wt: 704#
- Heifer Bull
- Top 3% \$QG
- Top 4% MB



46 Mr JT Sure Fire 831

Birth Date: 02/14/2018 • 19089240



Connealy In Sure 8524
GAR Sure Fire
 Chair Rock 5050 GAR 8086
 RB Active Duty 010
Miss JT Demi 343
 Miss JT Dakota Lady 133

PRODUCTION					MATERNAL		
CED	BW	WW	YW	DMI	HP	CEM	MILK
+11	+8	+62	+109	-13	+12.9	+13	+26

CARCASS		\$VALUES					
MARB	RE	\$W	\$F	\$G	\$QG	\$YG	\$B
+1.05	+57	+69.55	+80.94	+51.43	+46.96	+4.47	+149.58

- BW: 84#, Adj. 205 day wt: 684#
- Calving Ease
- Top 4% DOC
- Top 5% \$QG
- Top 10% MB, \$W, \$G, CEM



47 Mr JT Sure Fire 861

Birth Date: 02/26/2018 • 19089246



Connealy In Sure 8524
GAR Sure Fire
 Chair Rock 5050 GAR 8086
 WMR Timeless 458
Miss JT Lady of Time 323
 Miss JT Total Lady 630

PRODUCTION					MATERNAL		
CED	BW	WW	YW	DMI	HP	CEM	MILK
+6	+2.5	+69	+121	+1.12	+12.2	+11	+24

CARCASS		\$VALUES					
MARB	RE	\$W	\$F	\$G	\$QG	\$YG	\$B
+93	+80	+66.83	+73.31	+50.85	+44.30	+6.55	+149.29

- BW: 88#, Adj. 205 day wt: 674#
- Top 20% SC, \$F, \$B
- Top 10% WW, YW, MB, SW, \$G, \$QG



50 Mr JT Sure Fire 870

Birth Date: 03/07/2018 • 19089210



Connealy In Sure 8524
GAR Sure Fire
 Chair Rock 5050 GAR 8086
 KG Alliance 1193
Miss JT Alli 532
 Miss JT Northern Lady 060

PRODUCTION					MATERNAL		
CED	BW	WW	YW	DMI	HP	CEM	MILK
+13	-.3	+56	+105	+.83	+8.6	+5	+27

CARCASS		\$VALUES					
MARB	RE	\$W	\$F	\$G	\$QG	\$YG	\$B
+95	+81	+58.08	+58.18	+49.50	+44.81	+4.69	+147.74

- BW: 77#, Adj. 205 day wt: 610#
- Top 15% YH, RE
- Heifer Bull
- Top 20% \$B
- Top 10% DOC, MB, \$G, \$QG



48 Mr JT Sure Fire 838

Birth Date: 02/16/2018 • 19089186



Connealy In Sure 8524
GAR Sure Fire
 Chair Rock 5050 GAR 8086
 Kramers Apollo 317
Miss JT Amy 628
 Miss JT Lady CC 101

PRODUCTION					MATERNAL		
CED	BW	WW	YW	DMI	HP	CEM	MILK
+13	-.4	+39	+87	-.16	+12.9	+9	+38

CARCASS		\$VALUES					
MARB	RE	\$W	\$F	\$G	\$QG	\$YG	\$B
+79	+85	+46.62	+57.10	+46.96	+40.60	+6.36	+144.81

- BW: 72#, Adj. 205 day wt: 656#
- Top 1% SC, MILK
- Heifer Bull
- Top 10% RE, DOC



51 Mr JT Speedway 841

Birth Date: 02/17/2018 • 19089208



GAR Objective 7125
SF Speedway A187
 SF Tiara X151
 Kramers Apollo 317
Miss JT Amy 625
 Miss JT Dakota Mae 706

PRODUCTION					MATERNAL		
CED	BW	WW	YW	DMI	HP	CEM	MILK
+11	+.8	+73	+130	+.46	+14.3	+10	+32

CARCASS		\$VALUES					
MARB	RE	\$W	\$F	\$G	\$QG	\$YG	\$B
+73	+.64	+79.84	+101.42	+42.81	+38.84	+3.97	+175.74

- BW: 75#, Adj. 205 day wt: 741#
- Top 4% WW
- Heifer Bull
- Top 10% CW, MILK
- Top 1% \$W
- WW Ratio 107
- Top 3% YW, \$F, \$B



49 Mr JT Sure Fire 807

Birth Date: 01/31/2018 • 19089005



Connealy In Sure 8524
GAR Sure Fire
 Chair Rock 5050 GAR 8086
 Connealy Countdown
HRA Miss Countdown 1606
 HRA Thunder Time

PRODUCTION					MATERNAL		
CED	BW	WW	YW	DMI	HP	CEM	MILK
+9	+1.6	+72	+130	+1.20	+11.5	+9	+28

CARCASS		\$VALUES					
MARB	RE	\$W	\$F	\$G	\$QG	\$YG	\$B
+91	+93	+73.28	+87.10	+47.28	+43.87	+3.41	+170.58

- BW: 78#, Adj. 205 day wt: 692#
- Calving Ease
- Top 2% SC, DOC
- Top 3% YW, CW
- Top 4% \$W
- Top 5% WW, \$B
- Top 10% RE, MH, YH



52 Mr JT Speedway 806

Birth Date: 01/28/2018 • 19089206



GAR Objective 7125
SF Speedway A187
 SF Tiara X151
 KCF Bennett Absolute
Miss JT Abby 635
 Miss JT Lady CC 100

PRODUCTION					MATERNAL		
CED	BW	WW	YW	DMI	HP	CEM	MILK
+12	-.7	+60	+109	+.03	+10.2	+7	+23

CARCASS		\$VALUES					
MARB	RE	\$W	\$F	\$G	\$QG	\$YG	\$B
+.60	+1.02	+61.47	+79.15	+45.03	+34.62	+10.41	+162.18

- BW: 62#, Adj. 205 day wt: 674#
- Top 10% RADG, DOC, FT, \$B
- Heifer Bull
- Top 3% RE, \$YG



53 Mr JT Speedway 805

Birth Date: 01/27/2018 • 19089205



GAR Objective 7125
SF Speedway A187
SF Tiara X151

HF Thunderbird 146Y
Miss JT Lady Bird 660
Miss JT Lady of X 0191

PRODUCTION					MATERNAL		
CED	BW	WW	YW	DMI	HP	CEM	MILK
+8	+1.4	+59	+101	+01	+9.4	+7	+21

CARCASS		\$VALUES					
MARB	RE	\$W	\$F	\$G	\$QG	\$YG	\$B
+54	+94	+52.92	+65.20	+43.39	+32.40	+10.99	+141.84

- BW: 70#, Adj. 205 day wt: 581#
- Calving Ease
- Top 2% SYG
- Top 5% RE, FT
- Top 15% RADG



54 Mr JT High Prime 850

Birth Date: 02/20/2018 • 19089036



CA Future Direction 5321
HIGH PRIME 4037
High Designer Lady 603

PGA Converter 597
Miss JT Dakota Lady 1113
Miss JT Double O4 - 433

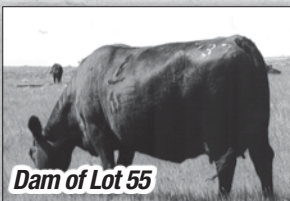
PRODUCTION					MATERNAL		
CED	BW	WW	YW	DMI	HP	CEM	MILK
+4	+3.1	+58	+98	+20	+12.5	+6	+24

CARCASS		\$VALUES					
MARB	RE	\$W	\$F	\$G	\$QG	\$YG	\$B
+69	+18	+48.81	+56.47	+31.55	+37.73	-6.18	+149.88

- BW: 88#, Adj. 205 day wt: 758#
- Pam is a top milker
- WN Ratio 110
- Top 3% SC
- Top 15% CW

55 Mr JT High Prime 854

Birth Date: 02/23/2018 • 19089035



CA Future Direction 5321
HIGH PRIME 4037
High Designer Lady 603

TC Total 410
Miss JT Total Lady 737
Miss JT Great Lady 538

PRODUCTION					MATERNAL		
CED	BW	WW	YW	DMI	HP	CEM	MILK
+2	+3.1	+70	+120	-15	+8.4	+13	+26

CARCASS		\$VALUES					
MARB	RE	\$W	\$F	\$G	\$QG	\$YG	\$B
+43	+63	+61.70	+96.52	+31.57	+27.94	+3.63	+177.50

- BW: 82#, Adj. 205 day wt: 729#
- Dam is 11 yr old heard matron
- Top 3% \$B
- Top 4% RADG, CW

56 Mr JT High Prime 847

Birth Date: 02/18/2018 • 19089037



CA Future Direction 5321
HIGH PRIME 4037
High Designer Lady 603

Connealy Forefront
Miss JT Fancy Lady 6751
RA Connie F75

PRODUCTION					MATERNAL		
CED	BW	WW	YW	DMI	HP	CEM	MILK
-2	+3.2	+51	+87	-49	+12.0	+5	+18

CARCASS		\$VALUES					
MARB	RE	\$W	\$F	\$G	\$QG	\$YG	\$B
+43	+61	+33.74	+55.35	+33.37	+27.94	+5.43	+153.35

- BW: 87#, Adj. 205 day wt: 667#
- Dam is 12 years old
- Top 4% DMI, MH
- Top 10% RADG, MW

57 Mr JT Excitement 867

Birth Date: 02/28/2018 • 19090283

Basin Expedition R156
Basin Excitement
Basin Lady S532 AK

WMR Timeless 458
Miss JT Lady of Time 300
Miss JT Echo 551

PRODUCTION					MATERNAL		
CED	BW	WW	YW	DMI	HP	CEM	MILK
+10	+5	+68	+118	+91	+19.0	+8	+27

CARCASS		\$VALUES					
MARB	RE	\$W	\$F	\$G	\$QG	\$YG	\$B
+42	+49	+73.79	+72.52	+28.54	+27.50	+1.04	+131.90

- BW: 88#, Adj. 205 day wt: 771#
- DDC
- WN Ratio 111
- Top 1% HP
- Top 3% DOC
- Top 4% \$W
- Top 10% WW, YW
- Top 20% CED

58 Mr JT Excitement 824

Birth Date: 02/11/2018 • 19090289

Basin Expedition R156
Basin Excitement
Basin Lady S532 AK

Sitz Traveler 6802
Miss JT Lady of Traveler 901
Miss JT Connie 760

PRODUCTION					MATERNAL		
CED	BW	WW	YW	DMI	HP	CEM	MILK
+7	+9	+61	+110	+49	+14.1	+8	+27

CARCASS		\$VALUES					
MARB	RE	\$W	\$F	\$G	\$QG	\$YG	\$B
+24	+24	+63.13	+70.93	+16.78	+18.82	-2.04	+123.28

- BW: 85#, Adj. 205 day wt: 777#
- DDC
- WN Ratio 112
- Top 15% HP, \$W
- Top 20% YW
- Top 25% WW, CW, \$F

59 Mr JT Excitement 843

Birth Date: 02/28/2018 • 19090285



Basin Expedition R156
Basin Excitement
 Basin Lady S532 AK
 WMR Timeless 458
Miss JT Lady of Time 322
 Miss JT Poker Alice 642

PRODUCTION					MATERNAL		
CED	BW	WW	YW	DMI	HP	CEM	MILK
+13	-1.5	+54	+103	+75	+12.3	+13	+28

CARCASS		\$VALUES					
MARB	RE	\$W	\$F	\$G	\$QG	\$YG	\$B
+68	+46	+62.89	+57.50	+40.84	+37.37	+3.47	+129.39

- BW: 69#, Adj. 205 day wt: 742#
- Heifer Bull
- WN Ratio 107
- Top 1% DOC
- Top 5% BW
- Top 10% CED, CEM
- Top 15% SC, \$W

60 Mr JT Easy Decision 832

Birth Date: 02/14/2018 • 19089282



Vin-Mar O'Reilly Factor
Bushs Easy Decision 98
 Bushs Big Blackbird 7885
 Bar 69 Traveler 6802 4041
Miss JT Lady of Travel 8551
 Miss JT Echo 551

PRODUCTION					MATERNAL		
CED	BW	WW	YW	DMI	HP	CEM	MILK
+6	+2.2	+61	+120	+22	+11.5	+10	+30

CARCASS		\$VALUES					
MARB	RE	\$W	\$F	\$G	\$QG	\$YG	\$B
+74	+76	+53.08	+95.77	+44.82	+39.18	+5.64	+171.83

- BW: 85#, Adj. 205 day wt: 743#
- Calving Ease
- Top 1% DOC
- Top 3% MW
- Top 4% RADG, \$B
- Top 5% \$F
- Top 10% YW, YH, SC
- Top 15% MILK, CW



61 Mr JT Easy Decision 814

Birth Date: 02/07/2018 • 19089274



Dam of Lot 61

Vin-Mar O'Reilly Factor
Bushs Easy Decision 98
 Bushs Big Blackbird 7885
 FV 20K King 308M
Miss JT Queen 9610
 Miss JT Connie 610

PRODUCTION					MATERNAL		
CED	BW	WW	YW	DMI	HP	CEM	MILK
+13	-8	+37	+67	-43	+11.0	+13	+23

CARCASS		\$VALUES					
MARB	RE	\$W	\$F	\$G	\$QG	\$YG	\$B
+59	+07	+32.78	+28.25	+36.77	+34.27	+2.50	+85.28

- BW: 74#, Adj. 205 day wt: 625#
- Heifer Bull
- Top 5% DMI
- Top 10% CED, CEM
- Top 15% BW

62 Mr JT Cadillac Jack 876

Birth Date: 03/28/2018 • 19142142

CFCC Black Jack 001
KR Cadillac Jack
 WK Blackbird 5066
 HARB Pendleton 765 J H
Miss JT Skymere 066
 Miss JT Skymere 380

PRODUCTION					MATERNAL		
CED	BW	WW	YW	DMI	HP	CEM	MILK
+11	+1.3	+59	+101	+44	+11.5	+14	+20

CARCASS		\$VALUES					
MARB	RE	\$W	\$F	\$G	\$QG	\$YG	\$B
+19	+35	+53.00	+56.43	+17.36	+16.11	+1.25	+114.59

- BW: 91#, Adj. 205 day wt: 759#
- A favorite since birth
- His dam has never missed
- WN Ratio 110
- Top 4% CEM
- Top 15% CED

63 Mr JT Cadillac Jack 882

Birth Date: 04/06/2018 • 19142149



Lot 63

CFCC Black Jack 001
KR Cadillac Jack
 WK Blackbird 5066
 Connealy Confidence 0100
Miss JT Proud Lady 461
 Miss JT Lady of Time 308

PRODUCTION					MATERNAL		
CED	BW	WW	YW	DMI	HP	CEM	MILK
+13	-9	+40	+68	-43	+11.6	+14	+23

CARCASS		\$VALUES					
MARB	RE	\$W	\$F	\$G	\$QG	\$YG	\$B
+57	+15	+41.94	+27.97	+33.03	+33.47	-.44	+85.78

- BW: 76#, 205 day wt: 745#
- Heifer Bull
- Very efficient bull
- WN Ratio 108
- Top 4% CEM
- Top 5% DMI
- Top 10% BW, CED

64 Mr JT Cadillac Jack 844

Birth Date: 03/25/2018 • 19089998

CFCC Black Jack 001
KR Cadillac Jack
 WK Blackbird 5066
 WMR Timeless 458
Miss JT Lady of Time 435
 Miss JT Lady of Travel 8551

PRODUCTION					MATERNAL		
CED	BW	WW	YW	DMI	HP	CEM	MILK
+5	+2.9	+55	+89	+20	+12.8	+12	+25

CARCASS		\$VALUES					
MARB	RE	\$W	\$F	\$G	\$QG	\$YG	\$B
+50	+52	+51.22	+42.09	+35.72	+30.88	+4.84	+134.48

- BW: 88#, Adj. 205 day wt: 755#
- WN Ratio 109
- Young bull with a lot of thickness
- Hails from a strong maternal line

65 Mr JT Cadillac 885

Birth Date: 04/08/2018 • 19142156

CFCC Black Jack 001
KR Cadillac Jack
 WK Blackbird 5066
 AAR Ten X 7008 SA
Miss JT Lady of X 571
 Miss JT Power Lady 514



PRODUCTION					MATERNAL		
CED	BW	WW	YW	DMI	HP	CEM	MILK
+4	+2.2	+56	+92	-22	+12.0	+16	+18

CARCASS		\$VALUES					
MARB	RE	\$W	\$F	\$G	\$QG	\$YG	\$B
+75	+38	+46.53	+55.42	+41.70	+39.44	+2.26	+140.20

- BW: 89#, Adj. 205 day wt: 745#
- Very Efficient
- WN Ratio 108
- Top 1% CEM
- Top 15% DMI
- Top 20% \$EN, \$QG
- Top 25% MB



66 Mr JT Cadillac Jack 879

Birth Date: 04/03/2018 • 19142144

CFCC Black Jack 001
KR Cadillac Jack
 WK Blackbird 5066
 Limestone Jupiter U449
Miss JT Juliet 152
 Miss JT Star Light 8556

PRODUCTION					MATERNAL		
CED	BW	WW	YW	DMI	HP	CEM	MILK
+6	+2.8	+46	+79	-41	+14.1	+5	+32

CARCASS		\$VALUES					
MARB	RE	\$W	\$F	\$G	\$QG	\$YG	\$B
+56	+07	+56.44	+42.83	+35.46	+33.18	+2.28	+85.99

- BW: 92#, Adj. 205 day wt: 691#
- High efficient bull
- Top 5% DMI
- Top 10% MILK
- Top 15% HP

67 Mr JT Cadillac Jack 874

Birth Date: 03/24/2018 • 19089978

CFCC Black Jack 001
KR Cadillac Jack
 WK Blackbird 5066
 KCF Bennett Absolute
Miss JT Abby 519
 Miss JT Total Lady 125

PRODUCTION					MATERNAL		
CED	BW	WW	YW	DMI	HP	CEM	MILK
+15	-1.3	+55	+97	-.03	+15.2	+14	+17

CARCASS		\$VALUES					
MARB	RE	\$W	\$F	\$G	\$QG	\$YG	\$B
+52	+41	+49.00	+61.46	+34.76	+31.65	+3.11	+103.84

- BW: 79#, Adj. 205 day wt: 667#
- Heifer Bull
- Top 2% CED
- Top 4% CEM
- Top 10% BW, HP

68 Mr JT Cadillac Jack 881

Birth Date: 04/05/2018 • 19142151

CFCC Black Jack 001
KR Cadillac Jack
 WK Blackbird 5066
 RB Active Duty 010
Miss JT Demi 506
 Miss JT Freda 546



PRODUCTION					MATERNAL		
CED	BW	WW	YW	DMI	HP	CEM	MILK
+8	+1.6	+58	+110	-17	+12.1	+13	+26

CARCASS		\$VALUES					
MARB	RE	\$W	\$F	\$G	\$QG	\$YG	\$B
+53	+30	+57.65	+86.62	+31.79	+32.12	-.33	+155.31

- BW: 88#, Adj. 205 day wt: 749#
- WN Ratio 108
- Top 5% RADG
- Top 10% CEM, \$F
- Top 15% DMI, YH, \$B

69 Mr JT Cadillac Jack 886

Birth Date: 04/08/2018 • 19142155

CFCC Black Jack 001
KR Cadillac Jack
 WK Blackbird 5066
 HF Thunderbird 146Y
Miss JT Lady Bird 557
 Miss JT May Flower 872

PRODUCTION					MATERNAL		
CED	BW	WW	YW	DMI	HP	CEM	MILK
+10	+7	+64	+103	-.08	+13.5	+11	+21

CARCASS		\$VALUES					
MARB	RE	\$W	\$F	\$G	\$QG	\$YG	\$B
+24	+10	+64.86	+67.15	+15.08	+18.82	-3.74	+101.30

- BW: 80#, Adj. 205 day wt: 743#
- Calving Ease
- WN Ratio 107
- Top 15% WW, \$W, MH
- Top 20% CED, DMI, HP

70 Mr JT Cadillac Jack 875

Birth Date: 03/24/2018 • 19089989



CFCC Black Jack 001
KR Cadillac Jack
 WK Blackbird 5066
 SAV 8180 Traveler 004
Miss JT Lady of Traveler 857
 Miss JT Bonnie 467

PRODUCTION					MATERNAL		
CED	BW	WW	YW	DMI	HP	CEM	MILK
+4	+2.9	+51	+81	-.81	+12.5	+9	+23

CARCASS		\$VALUES					
MARB	RE	\$W	\$F	\$G	\$QG	\$YG	\$B
+35	+44	+47.64	+51.10	+29.38	+24.33	+5.05	+105.21

- BW: 86#, Adj. 205 day wt: 766#
- Outstanding profile
- Should be a very efficient bull
- Top 1% DMI

71 Mr JT Cadillac Jack 884

Birth Date: 04/07/2018 • 19142163



CFCC Black Jack 001
KR Cadillac Jack
 WK Blackbird 5066
 AAR Ten X 7008 SA
Miss JT Lady of X 580
 Miss JT Dana 687

PRODUCTION					MATERNAL		
CED	BW	WW	YW	DMI	HP	CEM	MILK
+2	+2.6	+50	+96	-.20	+10.2	+11	+31

CARCASS		\$VALUES					
MARB	RE	\$W	\$F	\$G	\$QG	\$YG	\$B
+86	-.06	+44.54	+66.67	+39.02	+42.46	-3.44	+131.24

- BW: 86#, Adj. 205 day wt: 646#
- Calving Ease
- Top 10% MILK, MH
- Top 15% DMI, YH, MW, MB, \$QG

72 Mr JT Cadillac Jack 878

Birth Date: 03/31/2018 • 19142145



CFCC Black Jack 001
KR Cadillac Jack
 WK Blackbird 5066
 WMR Timeless 458
Miss JT Lady of Time 201
 Miss JT Lady of Focus 703

PRODUCTION					MATERNAL		
CED	BW	WW	YW	DMI	HP	CEM	MILK
+0	+4.6	+65	+115	+05	+10.8	+10	+16

CARCASS		\$VALUES					
MARB	RE	\$W	\$F	\$G	\$QG	\$YG	\$B
+35	+44	+37.83	+86.52	+27.28	+24.33	+2.95	+145.48

- BW: 93#, Adj. 205 day wt: 689#
- Top 2% MW, MH
- Top 4% YH
- Top 10% RADG, SC, \$F
- Top 15% WW, YW

73 Mr JT Investment 873

Birth Date: 03/18/2018 • 19085968



Pine Creek Investment 4213J
Pine Creek Investment 6198J
 PCAR Special Lady 2031J
 KG Alliance 1193
Miss JT Alli 617
 Miss JT Proud Lady 462

PRODUCTION					MATERNAL		
CED	BW	WW	YW	DMI	HP	CEM	MILK
-2	+3.2	+72	+124	+18	+15.2	+6	+17

CARCASS		\$VALUES					
MARB	RE	\$W	\$F	\$G	\$QG	\$YG	\$B
+53	+62	+56.87	+96.07	+37.03	+32.12	+4.91	+160.27

- BW: 88#, Adj. 205 day wt: 785#
- Top 5% WW, \$F
- Top 10% YW, HP, \$B



74 Mr JT Investment 872

Birth Date: 03/17/2018 • 19085969

Pine Creek Investment 4213J
Pine Creek Investment 6198J
 PCAR Special Lady 2031J
 Basin Excitement
Miss JT Echo 647
 Miss JT Lady of Time 308

PRODUCTION					MATERNAL		
CED	BW	WW	YW	DMI	HP	CEM	MILK
+2	+1.6	+63	+103	+44	+12.0	+4	+17

CARCASS		\$VALUES					
MARB	RE	\$W	\$F	\$G	\$QG	\$YG	\$B
+40	+42	+56.69	+57.27	+29.39	+26.49	+2.90	+109.32

- BW: 70#, Adj. 205 day wt: 674#
- Calving Ease
- Top Maternal Lines

75 Mr JT Investment 862

Birth Date: 02/26/2018 • 19085967

Pine Creek Investment 4213J
Pine Creek Investment 6198J
 PCAR Special Lady 2031J
 KG Alliance 1193
Miss JT Alli 613
 Miss JT Proud Lady 472

PRODUCTION					MATERNAL		
CED	BW	WW	YW	DMI	HP	CEM	MILK
+3	+1.4	+41	+78	+29	+13.8	+6	+19

CARCASS		\$VALUES					
MARB	RE	\$W	\$F	\$G	\$QG	\$YG	\$B
+19	+48	+33.60	+30.22	+24.55	+16.11	+8.44	+67.48

- BW: 84#, Adj. 205 day wt: 693#
- Calving Ease
- Good Thickness

76 Mr JT Investment 865

Birth Date: 02/28/2018 • 19089185

Pine Creek Investment 4213J
Pine Creek Investment 6198J
 PCAR Special Lady 2031J

Kramers Apollo 317
Miss JT Amy 632
 Miss JT Right Lady 560

PRODUCTION					MATERNAL		
CED	BW	WW	YW	DMI	HP	CEM	MILK
+3	+8	+57	+90	+05	+12.5	+1	+18

CARCASS		\$VALUES					
MARB	RE	\$W	\$F	\$G	\$QG	\$YG	\$B
+03	+84	+53.64	+45.56	+17.17	+6.92	+10.25	+88.28

- BW: 77#, Adj. 205 day wt: 686#
- Heifer Bull
- Top 3% SYG
- Top 10% RE

77 Mr JT Investment 880

Birth Date: 04/04/2018 • 19133370



Pine Creek Investment 4213J
Pine Creek Investment 6198J
 PCAR Special Lady 2031J

RB Active Duty 010
Miss JT Demi 502
 Miss JT Lady CC 109

PRODUCTION					MATERNAL		
CED	BW	WW	YW	DMI	HP	CEM	MILK
+5	+2.6	+63	+109	-31	+14.1	+6	+24

CARCASS		\$VALUES					
MARB	RE	\$W	\$F	\$G	\$QG	\$YG	\$B
+38	+63	+60.13	+83.87	+28.93	+25.63	+3.30	+168.30

- BW: 81#, Adj. 205 day wt: 761#
- Calving Ease
- Top 10% RADG, DMI, SC, CW, \$B
- Top 15% HP, \$F
- Top 20% WW, YW, \$W



BUY BULLS ON TARGET

Genetic Recommendations:

	Value
Marbling EPD (Marb)	+ 0.53
Dollar Grid Carcass Index (\$G)	+ 33.97

The Targeting the Brand logo is designed to highlight registered Angus bulls with greater genetic potential to produce calves meeting the most challenging specifications of the *Certified Angus Beef*® brand. Bulls must be at least breed average or better for marbling EPD and \$ Grid of non-parent Angus sires to qualify for use of the Targeting the Brand logo. Even when these numbers do not appear on the catalog listing, the logo gives you confidence that these minimum genetic requirements are met. Actual EPD requirements are outlined below based on the breed averages from the Fall 2018 Angus Sire Summary.

Lot 1		Andy Angus 00123								
Bull	Reg: 0012345	9/1/2016	Tattoo: 000X							
CED	BW	WW	YW	SC	Milk	CW	Marb	RE	Fat	Doc
14	-2.2	51	92	1.60	31	28	0.82	0.80	0.070	27
CAB Andy 4567	XXXXXXXXXXXXXXXXXXXX	XXXXXXXXXXXXXXXXXXXX	XXXXXXXXXXXXXXXXXXXX	XXXXXXXXXXXXXXXXXXXX	XXXXXXXXXXXXXXXXXXXX	XXXXXXXXXXXXXXXXXXXX	XXXXXXXXXXXXXXXXXXXX	XXXXXXXXXXXXXXXXXXXX	XXXXXXXXXXXXXXXXXXXX	XXXXXXXXXXXXXXXXXXXX
CAB Andy Angus 123	XXXXXXXXXXXXXXXXXXXX	XXXXXXXXXXXXXXXXXXXX	XXXXXXXXXXXXXXXXXXXX	XXXXXXXXXXXXXXXXXXXX	XXXXXXXXXXXXXXXXXXXX	XXXXXXXXXXXXXXXXXXXX	XXXXXXXXXXXXXXXXXXXX	XXXXXXXXXXXXXXXXXXXX	XXXXXXXXXXXXXXXXXXXX	XXXXXXXXXXXXXXXXXXXX
1234 Black Cow	XXXXXXXXXXXXXXXXXXXX	XXXXXXXXXXXXXXXXXXXX	XXXXXXXXXXXXXXXXXXXX	XXXXXXXXXXXXXXXXXXXX	XXXXXXXXXXXXXXXXXXXX	XXXXXXXXXXXXXXXXXXXX	XXXXXXXXXXXXXXXXXXXX	XXXXXXXXXXXXXXXXXXXX	XXXXXXXXXXXXXXXXXXXX	XXXXXXXXXXXXXXXXXXXX
AAA Big Time406	XXXXXXXXXXXXXXXXXXXX	XXXXXXXXXXXXXXXXXXXX	XXXXXXXXXXXXXXXXXXXX	XXXXXXXXXXXXXXXXXXXX	XXXXXXXXXXXXXXXXXXXX	XXXXXXXXXXXXXXXXXXXX	XXXXXXXXXXXXXXXXXXXX	XXXXXXXXXXXXXXXXXXXX	XXXXXXXXXXXXXXXXXXXX	XXXXXXXXXXXXXXXXXXXX
AAA Lady Angus	XXXXXXXXXXXXXXXXXXXX	XXXXXXXXXXXXXXXXXXXX	XXXXXXXXXXXXXXXXXXXX	XXXXXXXXXXXXXXXXXXXX	XXXXXXXXXXXXXXXXXXXX	XXXXXXXXXXXXXXXXXXXX	XXXXXXXXXXXXXXXXXXXX	XXXXXXXXXXXXXXXXXXXX	XXXXXXXXXXXXXXXXXXXX	XXXXXXXXXXXXXXXXXXXX
0000 Top Dam	XXXXXXXXXXXXXXXXXXXX	XXXXXXXXXXXXXXXXXXXX	XXXXXXXXXXXXXXXXXXXX	XXXXXXXXXXXXXXXXXXXX	XXXXXXXXXXXXXXXXXXXX	XXXXXXXXXXXXXXXXXXXX	XXXXXXXXXXXXXXXXXXXX	XXXXXXXXXXXXXXXXXXXX	XXXXXXXXXXXXXXXXXXXX	XXXXXXXXXXXXXXXXXXXX
									\$W	67.78
									\$F	97.24
									\$G	41.00
									\$B	180.07



To learn more about how commercial cattlemen can further utilize the Targeting the Brand logo in marketing genetically superior feeder cattle, visit www.AngusLink.com

HEIFERS

78

Miss JT Patsy 842

Birth Date: 02/17/2018 • 19089307 • COW

EF Commando 1366
Baldrige Bronc
 Baldrige Isabel Y69
 R B Active Duty 010
Miss JT Demi 640
 Miss JT Alli 983

PRODUCTION					MATERNAL		
CED	BW	WW	YW	DMI	HP	CEM	MILK
+8	+2.4	+74	+128	+1.10	+11.1	+15	+30

CARCASS		\$VALUES					
MARB	RE	\$W	\$F	\$G	\$QG	\$YG	\$B
+17	+58	+74.84	+83.64	+17.14	+14.94	+2.20	+122.78

79

Miss JT Patsy 849

Birth Date: 02/19/2018 • 19089330 • COW

EF Commando 1366
Baldrige Bronc
 Baldrige Isabel Y69
 WMR Timeless 458
Miss JT Lady of Time 324
 Miss JT Connie 8103

PRODUCTION					MATERNAL		
CED	BW	WW	YW	DMI	HP	CEM	MILK
+9	+1.4	+77	+130	+90	+14.6	+12	+26

CARCASS		\$VALUES					
MARB	RE	\$W	\$F	\$G	\$QG	\$YG	\$B
+32	+64	+78.76	+89.38	+23.51	+22.80	+71	+149.36

80

Miss JT Patsy 856

Birth Date: 02/21/2018 • 19089342 • COW

EF Commando 1366
Baldrige Bronc
 Baldrige Isabel Y69
 Mr JT Camp Rock 713
Miss JT Dakota Mae 1111
 Miss JT Dakota Mae 706

PRODUCTION					MATERNAL		
CED	BW	WW	YW	DMI	HP	CEM	MILK
+16	-1.2	+64	+105	+72	+8.7	+14	+33

CARCASS		\$VALUES					
MARB	RE	\$W	\$F	\$G	\$QG	\$YG	\$B
+72	+52	+76.50	+54.58	+42.04	+38.58	+3.46	+118.91

81

Miss JT Kendra 819

Birth Date: 02/06/2018 • 19089332 • COW

EF Commando 1366
Baldrige Bronc
 Baldrige Isabel Y69
 Mr JT Ribeye 946
Miss JT Prime Lady 267
 Miss JT Prime Lady 037

PRODUCTION					MATERNAL		
CED	BW	WW	YW	DMI	HP	CEM	MILK
+9	+4	+56	+97	+89	+12.7	+7	+35

CARCASS		\$VALUES					
MARB	RE	\$W	\$F	\$G	\$QG	\$YG	\$B
+80	+41	+66.60	+41.97	+39.89	+40.86	-97	+119.47

82

Miss JT Patsy 831

Birth Date: 02/11/2018 • 19089306 • COW

EF Commando 1366
Baldrige Bronc
 Baldrige Isabel Y69
 R B Active Duty 010
Miss JT Demi 643
 Miss JT Echo 005

PRODUCTION					MATERNAL		
CED	BW	WW	YW	DMI	HP	CEM	MILK
+9	-1.0	+66	+109	+40	+13.6	+12	+29

CARCASS		\$VALUES					
MARB	RE	\$W	\$F	\$G	\$QG	\$YG	\$B
+63	+38	+73.07	+67.19	+39.50	+35.72	+3.78	+107.22

83

Miss JT Patsy 838

Birth Date: 02/14/2018 • 19089326 • COW

EF Commando 1366
Baldrige Bronc
 Baldrige Isabel Y69
 R B Active Duty 010
Miss JT Demi 337
 Miss JT Forward Lady 907

PRODUCTION					MATERNAL		
CED	BW	WW	YW	DMI	HP	CEM	MILK
+18	-2.7	+54	+104	+92	+14.9	+14	+37

CARCASS		\$VALUES					
MARB	RE	\$W	\$F	\$G	\$QG	\$YG	\$B
+87	+43	+69.71	+55.92	+41.69	+42.75	-1.06	+115.53

84**Miss JT Diamond 834**

Birth Date: 02/12/2018 • 19089283 • COW

K C F Bennett Southside
K C F Bennett TheRock A473
 K C F Miss Protege W148
 Sitz Traveler 8180
Miss JT Lady of Travel 751
 Miss JT Echo 551

PRODUCTION				
CED	BW	WW	YW	DMI
+8	+1.9	+66	+119	+87

MATERNAL		
HP	CEM	MILK
+15.2	+8	+29

CARCASS	
MARB	RE
+8.1	+7.2

\$VALUES					
\$W	\$F	\$G	\$QG	\$YG	\$B
+65.79	+76.78	+39.01	+35.01	+4.00	+154.84

88**Miss JT Kendra 861**

Birth Date: 02/25/2018 • 19089244 • COW

HA Outside 3008
HA Cowboy Up 5405
 HA Blackcap Lady 1602
 R B Active Duty 010
Miss JT Demi 334
 Miss JT Juliet 151

PRODUCTION				
CED	BW	WW	YW	DMI
+6	+4.0	+78	+130	+36

MATERNAL		
HP	CEM	MILK
+11	+9	+12

CARCASS	
MARB	RE
+1.9	+4.9

\$VALUES					
\$W	\$F	\$G	\$QG	\$YG	\$B
+56.97	+99.63	+16.42	+16.11	+3.1	+147.63

85**Miss JT Diamond 823**

Birth Date: 02/08/2018 • 19089265 • COW

K C F Bennett Southside
K C F Bennett TheRock A473
 K C F Miss Protege W148
 Connealy Consensus 7229
Miss JT Connie 346
 Miss JT Lady CC 100

PRODUCTION				
CED	BW	WW	YW	DMI
+15	-1.8	+57	+96	+45

MATERNAL		
HP	CEM	MILK
+12.0	+10	+27

CARCASS	
MARB	RE
+8.2	+2.7

\$VALUES					
\$W	\$F	\$G	\$QG	\$YG	\$B
+70.65	+48.38	+43.68	+41.40	+2.28	+108.80

89**Miss JT Kendra 859**

Birth Date: 02/22/2018 • 19089309 • COW

HA Outside 3008
HA Cowboy Up 5405
 HA Blackcap Lady 1602
 HF Thunderbird 146Y
Miss JT Lady Bird 552
 Miss JT Lady of Travel 011

PRODUCTION				
CED	BW	WW	YW	DMI
+4	+3.0	+77	+130	+0.2

MATERNAL		
HP	CEM	MILK
+9.5	+2	+13

CARCASS	
MARB	RE
+1.0	+7.4

\$VALUES					
\$W	\$F	\$G	\$QG	\$YG	\$B
+55.58	+107.33	+16.02	+11.09	+4.93	+162.40

86**Miss JT Diamond 828**

Birth Date: 02/10/2018 • 19089275 • COW

K C F Bennett Southside
K C F Bennett TheRock A473
 K C F Miss Protege W148
 Mr JT Camp Rock 713
Miss JT Lady of Camp 909
 Miss JT Lady of Travel 725

PRODUCTION				
CED	BW	WW	YW	DMI
+3	+4.0	+74	+118	+68

MATERNAL		
HP	CEM	MILK
+9.7	+6	+21

CARCASS	
MARB	RE
+1.01	+3.38

\$VALUES					
\$W	\$F	\$G	\$QG	\$YG	\$B
+62.45	+72.73	+48.04	+46.13	+1.91	+156.48

90**Miss JT Kendra 822**

Birth Date: 02/07/2018 • 19089346 • COW

HA Outside 3008
HA Cowboy Up 5405
 HA Blackcap Lady 1602
 SydGen C C & 7
Miss JT Dream Catcher 111
 Miss JT Fancy Lady 5960

PRODUCTION				
CED	BW	WW	YW	DMI
+3	+2.9	+63	+111	+1.0

MATERNAL		
HP	CEM	MILK
+9.1	+5	+20

CARCASS	
MARB	RE
+3.9	+3.5

\$VALUES					
\$W	\$F	\$G	\$QG	\$YG	\$B
+50.92	+79.32	+26.72	+26.07	+6.5	+147.59

87**Miss JT Diamond 816**

Birth Date: 02/05/2018 • 19089264 • COW

K C F Bennett Southside
K C F Bennett TheRock A473
 K C F Miss Protege W148
 Isu Imaging Q 9111
Miss JT Lady of Image 358
 Miss JT Wanda 702

PRODUCTION				
CED	BW	WW	YW	DMI
+8	+2.3	+56	+102	+89

MATERNAL		
HP	CEM	MILK
+10.1	+11	+14

CARCASS	
MARB	RE
+1.16	+7.0

\$VALUES					
\$W	\$F	\$G	\$QG	\$YG	\$B
+39.05	+51.30	+57.42	+49.21	+8.21	+124.70

91**Miss JT Annie 866**

Birth Date: 02/28/2018 • 19089236 • COW

Connealy in Sure 8524
G A R Sure Fire
 Chair Rock 5050 G A R 8086
 R B Active Duty 010
Miss JT Demi 335
 Miss JT Lady of Thunder 180

PRODUCTION				
CED	BW	WW	YW	DMI
+10	+2.9	+73	+131	+0.4

MATERNAL		
HP	CEM	MILK
+8.2	+12	+24

CARCASS	
MARB	RE
+5.8	+9.2

\$VALUES					
\$W	\$F	\$G	\$QG	\$YG	\$B
+65.33	+111.98	+39.83	+33.85	+5.98	+185.51

92 Miss JT Annie 826
 Birth Date: 02/08/2018 • 19089234 • COW

Connealy In Sure 8524
G A R Sure Fire
 Chair Rock 5050 G A R 8086
 R B Active Duty 010
Miss JT Demi 340
 Miss JT Ultimate Lady 055

PRODUCTION					MATERNAL		
CED	BW	WW	YW	DMI	HP	CEM	MILK
+13	+1.3	+64	+105	+68	+10.2	+11	+22

CARCASS		\$VALUES					
MARB	RE	\$W	\$F	\$G	\$QG	\$YG	\$B
+88	+41	+65.20	+55.39	+44.71	+43.09	+1.62	+122.39

93 Miss JT Annie 862
 Birth Date: 02/25/2018 • 19089232 • COW

Connealy In Sure 8524
G A R Sure Fire
 Chair Rock 5050 G A R 8086
 R B Active Duty 010
Miss JT Demi 442
 Miss JT Amber 057

PRODUCTION					MATERNAL		
CED	BW	WW	YW	DMI	HP	CEM	MILK
+13	-1.4	+57	+107	+69	+14.5	+15	+35

CARCASS		\$VALUES					
MARB	RE	\$W	\$F	\$G	\$QG	\$YG	\$B
+99	+66	+71.30	+64.09	+51.28	+45.69	+5.59	+153.06

94 Miss JT Annie 805
 Birth Date: 01/25/2018 • 19089191 • COW

Connealy In Sure 8524
G A R Sure Fire
 Chair Rock 5050 G A R 8086
 SF Speedway A187
Miss JT Lindsay 603
 Miss JT Front Lady 248

PRODUCTION					MATERNAL		
CED	BW	WW	YW	DMI	HP	CEM	MILK
+17	-2.8	+54	+92	+21	+9.7	+12	+24

CARCASS		\$VALUES					
MARB	RE	\$W	\$F	\$G	\$QG	\$YG	\$B
+1.37	+59	+65.25	+48.06	+57.78	+53.76	+4.02	+135.45

95 Miss JT Annie 804
 Birth Date: 01/25/2018 • 19089178 • COW

Connealy In Sure 8524
G A R Sure Fire
 Chair Rock 5050 G A R 8086
 K C F Bennett Absolute
Miss JT Abby 637
 Miss JT Susie 017

PRODUCTION					MATERNAL		
CED	BW	WW	YW	DMI	HP	CEM	MILK
+15	+1	+62	+105	+85	+9.3	+10	+18

CARCASS		\$VALUES					
MARB	RE	\$W	\$F	\$G	\$QG	\$YG	\$B
+90	+56	+58.58	+53.38	+49.14	+43.61	+5.53	+113.24

96 Miss JT Lucille 840
 Birth Date: 02/15/2018 • 19089343 • COW

CFCC Black Jack 001
KR Cadillac Jack
 WK Blackbird 5066
 HARB Pendleton 765 J H
PGA Jessica 109
 PGA Jessica 854

PRODUCTION					MATERNAL		
CED	BW	WW	YW	DMI	HP	CEM	MILK
+9	+9	+51	+93	-.22	+13.0	+10	+24

CARCASS		\$VALUES					
MARB	RE	\$W	\$F	\$G	\$QG	\$YG	\$B
+48	+30	+48.28	+60.81	+32.70	+30.07	+2.63	+126.16

97 Miss JT Lucille 868
 Birth Date: 03/06/2018 • 19090001 • COW

CFCC Black Jack 001
KR Cadillac Jack
 WK Blackbird 5066
 HF Thunderbird 146Y
Miss JT Foxy Lady 550
 Miss JT Lady of X 0191

PRODUCTION					MATERNAL		
CED	BW	WW	YW	DMI	HP	CEM	MILK
+9	+1	+36	+57	-.70	+14.9	+9	+18

CARCASS		\$VALUES					
MARB	RE	\$W	\$F	\$G	\$QG	\$YG	\$B
+33	+33	+35.91	+17.27	+28.60	+23.29	+5.31	+80.38

98 Miss JT Lucille 870
 Birth Date: 03/05/2018 • 19090002 • COW

CFCC Black Jack 001
KR Cadillac Jack
 WK Blackbird 5066
 Mytty in Focus
Miss JT Lady of Focus 929
 Miss J T Postelmere 809

PRODUCTION					MATERNAL		
CED	BW	WW	YW	DMI	HP	CEM	MILK
+10	+8	+42	+74	-.14	+7.1	+16	+27

CARCASS		\$VALUES					
MARB	RE	\$W	\$F	\$G	\$QG	\$YG	\$B
+21	+28	+46.59	+31.20	+21.55	+17.17	+4.38	+82.65

99 Miss JT Lucille 873
 Birth Date: 03/18/2018 • 19090004 • COW

CFCC Black Jack 001
KR Cadillac Jack
 WK Blackbird 5066
 Connealy Consensus 7229
Miss JT Lacey 215
 Miss JT Miriam 507

PRODUCTION					MATERNAL		
CED	BW	WW	YW	DMI	HP	CEM	MILK
+6	+2.2	+49	+88	-.03	+15.5	+11	+18

CARCASS		\$VALUES					
MARB	RE	\$W	\$F	\$G	\$QG	\$YG	\$B
+61	+08	+40.64	+49.19	+31.73	+35.01	-3.28	+119.90

100**Miss JT Lucille 867**

Birth Date: 02/28/2018 • 19090000 • COW

CFCC Black Jack 001
KR Cadillac Jack
 WK Blackbird 5066
 HF Thunderbird 146Y
Miss JT Jessica 554
 Miss JT Echo 005

PRODUCTION					MATERNAL		
CED	BW	WW	YW	DMI	HP	CEM	MILK
+6	+4.1	+50	+90	+12	+11.7	+10	+24

CARCASS		\$VALUES					
MARB	RE	\$W	\$F	\$G	\$QG	\$YG	\$B
+26	+47	+38.01	+49.08	+23.74	+19.81	+3.93	+98.78

101**Miss JT Lucille 874**

Birth Date: 03/18/2018 • 19090005 • COW

CFCC Black Jack 001
KR Cadillac Jack
 WK Blackbird 5066
 Connealy Capitalist 028
Miss JT Lady of Time 512
 Miss JT Lady of Time 322

PRODUCTION					MATERNAL		
CED	BW	WW	YW	DMI	HP	CEM	MILK
+7	+2.5	+57	+101	+16	+14	+11	+27

CARCASS		\$VALUES					
MARB	RE	\$W	\$F	\$G	\$QG	\$YG	\$B
+29	+27	+51.55	+63.59	+19.54	+21.39	-1.85	+105.32

102**Miss JT Lindsay 829**

Birth Date: 02/11/2018 • 19089216 • COW

G A R Objective 7125
SF Speedway A187
 SF Tiara X151
 WK Bobcat
Miss JT Black Cat 231
 Miss JT Skymere 322

PRODUCTION					MATERNAL		
CED	BW	WW	YW	DMI	HP	CEM	MILK
+17	-7	+63	+111	+85	+10.5	+16	+30

CARCASS		\$VALUES					
MARB	RE	\$W	\$F	\$G	\$QG	\$YG	\$B
+85	+54	+69.64	+64.02	+46.25	+42.18	+4.07	+141.99

103**Mr T Lindsay 858**

Birth Date: 02/22/2018 • 19089214 • COW

G A R Objective 7125
SF Speedway A187
 SF Tiara X151
 Connealy Confidence 0100
Miss JT Proud Lady 462
 Miss JT Dakota Lady 133

PRODUCTION					MATERNAL		
CED	BW	WW	YW	DMI	HP	CEM	MILK
+16	-2.1	+64	+118	+30	+11.1	+15	+35

CARCASS		\$VALUES					
MARB	RE	\$W	\$F	\$G	\$QG	\$YG	\$B
+1.10	+64	+76.95	+87.97	+53.72	+47.97	+5.75	+150.38

104**Miss JT Patsy 832**

Birth Date: 02/12/2018 • 19089340 • COW

G A R Objective 7125
SF Speedway A187
 SF Tiara X151
 Limestone Jupiter U449
Miss JT Juliet 146
 Miss JT Cindy 716

PRODUCTION					MATERNAL		
CED	BW	WW	YW	DMI	HP	CEM	MILK
+8	+2.6	+67	+111	+08	+10.5	+3	+17

CARCASS		\$VALUES					
MARB	RE	\$W	\$F	\$G	\$QG	\$YG	\$B
+21	+81	+55.02	+76.77	+24.37	+17.17	+7.20	+145.39

105**Miss JT Echo 836**

Birth Date: 02/14/2018 • 19090287 • COW

Basin Expedition R156
Basin Excitement
 Basin Lady S532 AK
 WMR Timeless 458
Miss JT Lady of Time 278
 Miss JT Poker Alice 603

PRODUCTION					MATERNAL		
CED	BW	WW	YW	DMI	HP	CEM	MILK
+7	+9	+55	+87	-.06	+17.2	+8	+32

CARCASS		\$VALUES					
MARB	RE	\$W	\$F	\$G	\$QG	\$YG	\$B
+15	+53	+71.13	+43.78	+20.85	+13.86	+6.99	+84.88

106**Miss JT Echo 847**

Birth Date: 02/19/2018 • 19090293 • COW

Basin Expedition R156
Basin Excitement
 Basin Lady S532 AK
 TC Total 410
Miss JT Total Lady 654
 Miss JT Bandie 345

PRODUCTION					MATERNAL		
CED	BW	WW	YW	DMI	HP	CEM	MILK
+18	-4.3	+45	+82	-.05	+17.5	+11	+31

CARCASS		\$VALUES					
MARB	RE	\$W	\$F	\$G	\$QG	\$YG	\$B
+63	+30	+59.12	+41.55	+36.34	+35.72	+6.2	+78.43

107**Miss JT Prime Lady 825**

Birth Date: 02/08/2018 • 19089038 • COW

C A Future Direction 5321
HIGH PRIME 4037
 High Designer Lady 603
 Connealy Onward
Miss J T Darma 500
 Miss J T Darma 147

PRODUCTION					MATERNAL		
CED	BW	WW	YW	DMI	HP	CEM	MILK
+10	+1.2	+49	+81	-.27	+13.1	+7	+15

CARCASS		\$VALUES					
MARB	RE	\$W	\$F	\$G	\$QG	\$YG	\$B
+65	+94	+32.85	+41.46	+46.27	+36.34	+9.93	+141.21

108**Miss JT Julliana 809**

Birth Date: 01/28/2018 • 19085974 • COW

Kramers Apollo 317
Mr JT Apollo 620
Miss JT Precious Lady 030G A R Prophet
Miss JT Polly 650
Miss JT Polly 981

PRODUCTION					MATERNAL		
CED	BW	WW	YW	DMI	HP	CEM	MILK
+10	+2	+56	+87	+1.11	+9.9	+12	+12

CARCASS		\$VALUES					
MARB	RE	\$W	\$F	\$G	\$QG	\$YG	\$B
+44	+48	+48.10	+19.21	+33.78	+28.37	+5.41	+82.38

109**Miss JT Lacey 857**

Birth Date: 02/22/2018 • 19085977 • COW

Pine Creek Investment 4213J
Pine Creek Investment 6198J
PCAR Special Lady 2031JKramers Apollo 317
Miss JT Amy 634
Miss JT Lady of Travel 906

PRODUCTION					MATERNAL		
CED	BW	WW	YW	DMI	HP	CEM	MILK
+5	+7	+46	+74	-16	+12.9	+9	+22

CARCASS		\$VALUES					
MARB	RE	\$W	\$F	\$G	\$QG	\$YG	\$B
+15	+35	+48.17	+28.88	+20.51	+13.86	+6.65	+90.14

110**Miss JT Lacey 852**

Birth Date: 02/20/2018 • 19089189 • COW

Pine Creek Investment 4213J
Pine Creek Investment 6198J
PCAR Special Lady 2031JKramers Apollo 317
Miss JT Amy 631
Miss JT Poker Alice 862

PRODUCTION					MATERNAL		
CED	BW	WW	YW	DMI	HP	CEM	MILK
+2	+1.4	+44	+75	+18	+13.8	+7	+24

CARCASS		\$VALUES					
MARB	RE	\$W	\$F	\$G	\$QG	\$YG	\$B
+11	+77	+48.93	+25.07	+21.52	+11.65	+9.87	+80.45

111**Miss JT Lacey 876**

Birth Date: 03/27/2018 • 19133371 • COW

Pine Creek Investment 4213J
Pine Creek Investment 6198J
PCAR Special Lady 2031JSitz Sensation 693A
Miss JT Sensation 565
Miss JT Poker Alice 862

PRODUCTION					MATERNAL		
CED	BW	WW	YW	DMI	HP	CEM	MILK
+7	+7	+45	+86	-.06	+15	+10	+22

CARCASS		\$VALUES					
MARB	RE	\$W	\$F	\$G	\$QG	\$YG	\$B
-.07	+57	+39.81	+48.99	+7.04	+39	+6.65	+76.34

112**Miss JT Lacey 869**

Birth Date: 03/06/2018 • 19085978 • COW

Pine Creek Investment 4213J
Pine Creek Investment 6198J
PCAR Special Lady 2031JSedgwicks Outlaw 538W
Miss JT Kitty 649
Miss JT Creda 023

PRODUCTION					MATERNAL		
CED	BW	WW	YW	DMI	HP	CEM	MILK
+5	+6	+49	+80	+32	+9.7	+5	+20

CARCASS		\$VALUES					
MARB	RE	\$W	\$F	\$G	\$QG	\$YG	\$B
+37	+31	+46.79	+27.64	+31.15	+25.14	+6.01	+83.87

113**Miss JT Lacey 879**

Birth Date: 04/06/2018 • 19133372 • COW

Pine Creek Investment 4213J
Pine Creek Investment 6198J
PCAR Special Lady 2031JWMR Timeless 458
Miss JT Lady of Time 200
Miss JT Lady of NI 519

PRODUCTION					MATERNAL		
CED	BW	WW	YW	DMI	HP	CEM	MILK
-4	+2.4	+55	+94	+26	+13.4	+2	+19

CARCASS		\$VALUES					
MARB	RE	\$W	\$F	\$G	\$QG	\$YG	\$B
+17	+74	+45.88	+50.00	+24.55	+14.94	+9.61	+93.09

114**Miss JT Lacey 881**

Birth Date: 04/11/2018 • 19133373 • COW

Pine Creek Investment 4213J
Pine Creek Investment 6198J
PCAR Special Lady 2031JA A R Ten X 7008 S A
Miss JT Lady of X 584
Miss JT Lady of Travel 751

PRODUCTION					MATERNAL		
CED	BW	WW	YW	DMI	HP	CEM	MILK
-3	+2.8	+59	+96	+01	+9.8	+3	+20

CARCASS		\$VALUES					
MARB	RE	\$W	\$F	\$G	\$QG	\$YG	\$B
+20	+63	+48.62	+55.93	+25.62	+16.64	+8.98	+108.13

115**Commercial Heifer**

Birth Date: 02/06/2018 • COW • BW: 68#

i50K Information

LOT#	CED	BW	WW	YW	DMI	YH	SC	Doc	HP	CEM	Milk	MW	MH	CW	MARB	RE	FAT	Tend
1	10	13	1	8	48	53	7	2	19	23	4	73	72	5	48	10	65	25
2	20	41	11	29	72	25	33	13	18	9	55	59	39	26	52	5	45	36
3	37	61	20	64	14	16	44	33	82	38	38	61	32	45	72	48	50	46
4	23	43	49	52	6	82	25	17	55	23	30	77	34	49	60	44	92	68
5	13	31	19	30	38	74	42	21	73	33	65	47	29	34	58	74	78	29
6	1	3	48	46	84	12	7	19	88	68	10	73	50	35	30	38	87	71
7	25	40	4	6	37	41	74	28	35	26	37	54	76	7	82	34	77	34
8	28	44	29	58	46	60	68	49	52	25	40	61	54	60	72	73	45	9
9	1	4	61	70	61	88	42	41	77	20	63	92	64	64	70	36	83	13
10	11	18	61	48	55	79	28	66	47	18	56	21	78	48	67	91	100	26
11	10	17	19	2	83	24	25	14	29	89	13	23	5	3	15	18	6	66
12	79	70	21	16	29	10	14	4	39	69	7	47	18	7	4	19	32	21
13	67	58	67	23	74	46	30	3	33	80	36	55	34	55	85	24	23	3
14	38	81	1	8	78	3	22	64	37	55	23	37	18	2	20	58	63	52
15	78	77	18	11	88	2	1	6	41	85	26	41	21	41	13	70	19	14
16	43	77	2	9	80	18	20	60	57	12	30	7	6	2	37	40	50	19
17	23	56	20	50	84	2	46	12	26	61	59	16	6	37	8	62	54	29
18	29	26	20	7	98	4	51	21	13	41	20	17	10	12	4	63	47	19
19	12	26	14	25	94	40	26	2	22	45	52	48	31	24	10	28	30	92
20	42	11	12	6	92	17	6	1	15	72	27	46	26	3	6	34	65	10
21	49	78	12	30	92	36	2	5	17	20	85	35	31	32	3	44	49	16
22	5	8	38	53	70	48	15	2	30	83	39	78	40	28	16	66	38	5
23	8	10	5	5	89	20	32	2	8	94	54	9	16	4	11	36	33	66
24	43	77	5	4	94	54	46	16	23	29	75	71	65	13	12	34	62	16
25	33	58	36	19	85	14	14	33	12	53	5	26	25	9	30	13	12	64
26	94	88	12	27	58	5	30	9	58	70	60	10	4	12	74	47	2	37
27	69	97	21	16	69	16	9	32	65	14	50	10	2	35	50	15	5	54
28	38	41	19	63	81	80	62	14	82	54	74	58	36	63	2	53	5	52
29	22	31	81	52	57	28	37	1	54	5	1	35	19	66	7	57	30	14
30	52	89	37	64	53	61	4	88	7	27	77	27	60	62	88	89	86	16
31	58	88	54	10	49	62	32	85	21	16	86	3	41	50	90	70	6	23
32	71	63	41	32	30	44	11	37	61	22	99	14	22	70	93	21	22	15
33	40	51	10	3	42	38	16	32	47	48	68	13	15	8	76	8	26	9
34	3	9	57	17	83	72	21	43	51	79	39	75	69	30	82	8	5	8
35	36	84	49	44	49	88	27	18	12	35	93	38	18	57	94	30	75	24
36	8	12	22	25	68	97	97	57	17	66	53	45	67	49	84	18	67	63
37	78	87	6	16	86	48	19	5	32	54	62	21	22	7	58	49	51	32

LOT#	CED	BW	WW	YW	DMI	YH	SC	Doc	HP	CEM	Milk	MW	MH	CW	MARB	RE	FAT	Tend
38	29	33	19	18	93	75	55	73	78	93	75	46	54	38	98	21	25	35
39	14	66	1	2	86	57	1	47	39	16	82	16	9	2	23	21	81	57
40	33	68	23	14	78	93	4	30	61	73	25	63	48	19	12	40	69	21
41	2	17	46	31	90	74	1	2	74	21	10	63	75	24	22	5	66	70
42	29	71	67	42	76	79	3	79	6	37	29	74	74	59	64	28	84	99
43	36	40	82	37	62	62	4	10	22	66	49	70	73	51	4	88	90	59
44	9	11	93	76	81	95	6	4	34	52	14	93	80	91	13	25	27	38
45	3	12	71	37	85	71	1	10	39	6	12	81	56	42	38	27	36	61
46	23	34	24	44	35	77	40	4	60	22	24	70	75	31	12	24	60	29
47	31	61	51	32	97	52	16	61	62	43	32	60	41	60	7	13	45	100
48	3	10	95	36	50	56	1	3	13	75	13	72	43	53	24	3	47	80
49	28	65	4	5	97	13	3	4	61	83	22	22	4	3	9	6	70	100
50	2	27	56	36	100	43	10	5	90	96	69	72	71	26	8	12	64	36
51	37	25	5	4	82	16	20	25	18	65	9	56	58	4	19	12	42	50
52	78	61	11	2	60	59	48	59	54	77	66	63	78	4	43	1	4	47
53	89	81	10	18	67	19	36	13	37	58	79	25	30	14	31	5	10	11
54	76	83	42	57	23	43	22	89	47	53	86	50	52	15	29	79	89	86
55	92	95	8	13	24	9	22	74	79	22	70	2	10	1	53	27	24	88
56	93	82	46	66	16	41	70	10	61	73	45	11	17	4	80	43	36	55
57	3	9	27	23	98	71	68	11	1	82	39	73	68	45	70	58	73	65
58	42	42	35	24	64	61	24	28	10	64	74	22	62	53	96	76	83	21
59	35	47	27	10	97	11	8	4	18	58	17	46	28	23	48	54	29	56
60	44	42	8	3	27	7	27	1	39	90	61	9	27	7	32	7	10	69
61	24	47	54	69	47	18	30	77	12	33	86	5	9	72	55	96	56	90
62	5	32	34	35	82	62	46	30	68	1	68	38	32	32	89	49	73	70
63	26	42	97	82	38	93	96	74	74	6	52	84	81	90	68	95	96	36
64	15	25	57	49	65	33	28	47	52	8	85	48	25	28	47	60	62	14
65	36	56	36	10	28	47	17	46	47	7	55	62	41	22	55	53	51	21
66	25	43	76	77	18	96	90	74	76	62	57	90	89	92	74	93	73	21
67	6	7	44	51	48	76	56	34	21	9	74	42	44	58	64	66	89	90
68	21	28	62	9	8	34	29	60	61	6	45	63	72	34	43	86	36	49
69	47	44	31	63	31	75	95	56	73	30	89	33	21	58	77	92	92	30
70	56	55	81	91	8	95	63	77	84	14	80	36	37	81	61	69	81	93
71	18	23	84	25	19	60	62	46	68	32	35	10	24	73	38	99	90	61
72	99	100	8	2	41	7	5	54	60	23	82	1	3	5	84	33	33	96
73	63	65	20	28	58	27	29	19	46	5	88	14	18	13	38	56	52	1
74	53	72	27	24	76	63	37	10	18	55	88	18	28	60	77	57	55	28
75	23	9	86	66	54	67	53	89	35	37	89	78	81	92	87	77	55	37
76	39	32	52	63	62	82	5	82	15	91	54	64	77	83	88	20	18	11
77	38	46	38	36	20	66	12	85	41	42	50	15	38	14	80	27	44	25

Thank You...



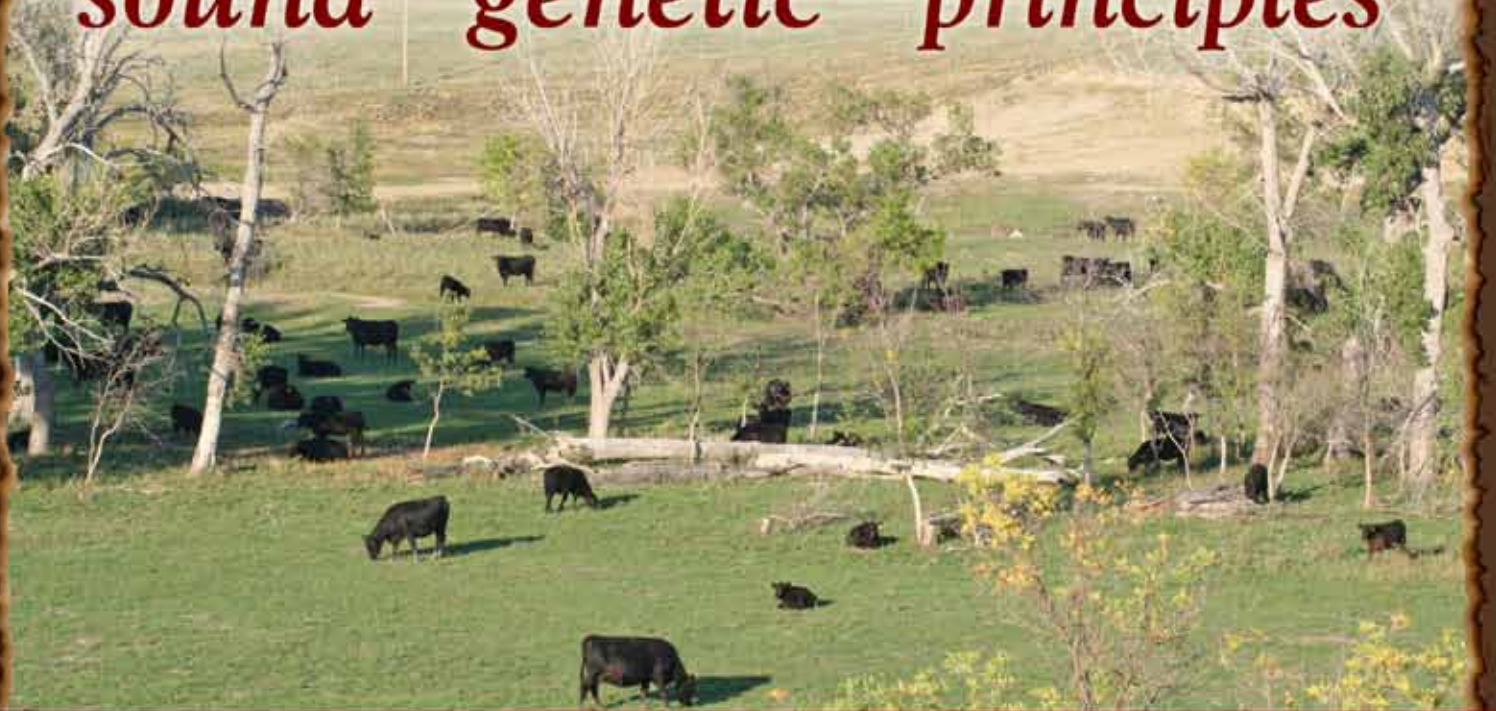
to the buyers at our 2018 Bull Sale!

Sletten Angus

John & Tammy Sletten
P.O Box 615
Faith, SD 57626-0615
605-484-7708



*A program with a **PLAN** based on
sound genetic principles*



SLETTEN  ANGUS